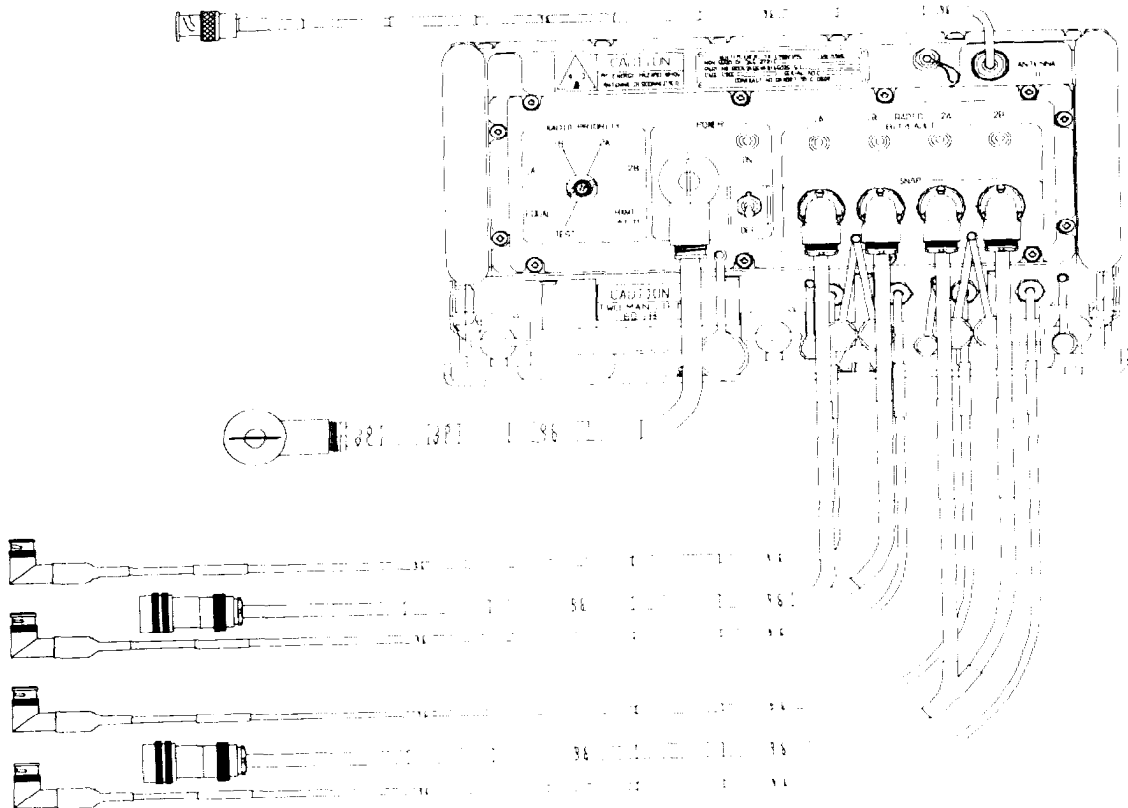


TECHNICAL MANUAL

UNIT AND DIRECT SUPPORT MAINTENANCE
REPAIR PARTS AND SPECIAL TOOLS LIST

FOR

FHMUX TD-1456NRC
(NSN 5820-01-365-2721) (EIC:N/A)
MOUNT MT-6845NRC
(NSN 5975-01-430-3109) (EIC: N/A)



Approved for public release; distribution is unlimited.

HEADQUARTERS, DEPARTMENT OF THE ARMY

1 OCTOBER 1998

Technical Manual

No, 11-5820-890-23P

HEADQUARTERS
DEPARTMENT OF THE ARMY
Washington, DC, 1 OCTOBER 1998

**UNIT AND DIRECT SUPPORT MAINTENANCE
REPAIR PARTS AND SPECIAL TOOLS LIST**

FOR

FHMUX TD-1466/VRC
(NSN 5820-01-365-2721) (EC: N/A)
MOUNT MT-6845/VRC
(NSN 5975-01430-3109) (EIC: N/A)

REPORTING ERRORS AND RECOMMENDING IMPROVEMENTS

You can help improve this manual. If you find any mistakes, or if you know of a way to improve the procedures please let us know. Mail your letter, DA Form 2028 (Recommended Changes to Publications and Blank Forms) or DA Form 2028-2 located in the back of this manual direct to: Commander US Army Communications Electronics Command and Fort Monmouth, ATTN: AMSEL-LC-LEO-D-CS-CFO, Fort Monmouth, NJ 07703-5000. The fax number is 732-532-1413. You may also e-mail your recommendations to AMSEL-LC-LEO-PUBS-CHG@cecom3.monmouth.army.mil.

Now you may also submit an electronic form 2028 for this and other SINCGARS Tech Manuals. Simply access the SINCGARS Home Page at the following URL, there you will find a link to the electronic form 2028:

<http://www.monmouth.army.mil/com/irc/comm/tradio/sincgars.html>

In either case a reply will be furnished direct to you.

TABLE OF CONTENTS

			Page	Illus /Figure
Section	I	Introduction	1	
	II	Repair Parts List	7	
Group	00	FHMUX/ Mounting Tray	1-1	1
	92	TD-14WVRC FHMUX	2-1	2
	9201	Matrix Paraplex Assembly	3-1	3
	920701	Rear Cover Assembly	4-1	4
	920102	Top Cover Assembly	5-1	5
	920103	Matrix Chassis Assembly	6-1	6
	920104	Front Panel Assembly	7-1	7
	92010401	Front Cover Assembly	8-1	8
	9202	Power Supply Synchronizer	9-1	9
	920201	CCRP Cover Assembly	10-1	10
	93	Mount MT-6845A/RC	11-1	11
Section	III	SPECIAL TOOLS LIST		
Group	9209	Special Tools	12-1	12
Section	IV	Cross-Reference Indexes		
		National Stock Number Index	1-1	
		Part Number Index	1-3	

SECTION I INTRODUCTION

Scope

This RPSTL lists and authorizes spares and repair parts; special tools; special test, measurement, and diagnostic equipment (TMDE); and other special support equipment required for the performance of unit and direct support maintenance of the FHMUX / Mounting Kit Assembly. It authorizes the requisitioning, issue, and disposition of spares, repair parts and special tools as indicated by the source, maintenance, and recoverability (SMR) codes.

General

This Repair Parts and Special Tools List is divided into the following sections:

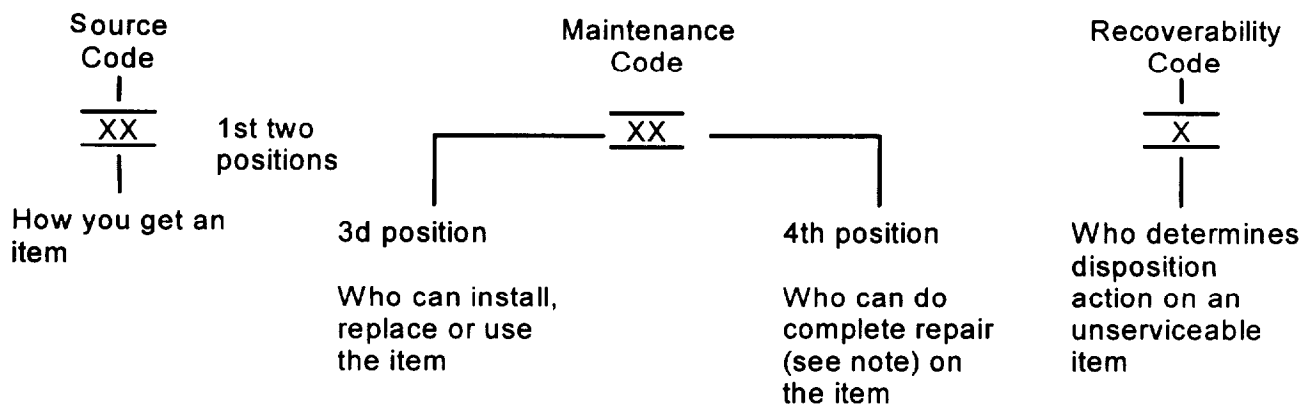
a. *Section II. Repair Parts List.* A list of spares and repair parts authorized by this RPSTL for use in the performance of maintenance. This list also includes parts which must be removed for replacement of the authorized parts. Parts lists are composed of functional groups in ascending item number sequence, with the parts in each group listed in ascending item number sequence. Figure numbers are listed directly beneath the group header. Bulk materials are listed in item name sequence. Repair part kits are listed separately in their own functional group within Section II. Repair parts for repairable special tools are also listed in this section. Items listed are shown on the associated illustration.

b. *Section III. Special Tools List.* Not applicable.

c. *Section IV. Cross-Reference Indexes.* A list, in National item identification number (NIIN) sequence, of all National stock numbered items appearing in the listing, followed by a list in alphanumeric sequence of all part numbers appearing in the listings. National stock numbers and part numbers are cross-referenced to each illustration figure and item number appearance. The figure number and item number index lists figure and item numbers in numeric sequence and cross-references National stock number, Commercial and Government Entity Code, and part numbers. The Reference Designator Index lists the reference designator in alphanumeric sequence and cross references the figure and item number.

Explanation Of Columns (Section II and III)

- a. *Item No. (Column (1)).* Indicates the number used to identify items called out in the illustrations.
- b. *SMR Code (Column (2)).* The source, maintenance, and recoverability (SMR) code is a five-position code containing supply/requisitioning information, maintenance category authorization criteria and disposition instructions, as shown in the following breakout:



NOTE

Complete repair: Maintenance capacity, capability, and authority to perform all corrective maintenance tasks of the "repair" function in a use/user environment in order to restore serviceability to a failed item.

(1) Source code. The source code tells you how to get an item needed for maintenance, repair, or over-haul of an end item/equipment. Explanations of source codes follows:

Code	Explanation
PA PB PC PD PE PF PG	Items with these codes are not to be requested/requisitioned individually. They are part of a kit which is authorized to the maintenance category indicated in the third position of the SMR code

NOTE
Items coded PC are subject to deterioration

KD KF KB	Items with these codes are not to be requested/requisitioned individually. They are part of a kit which is authorized to the maintenance category indicated in the third position of the SMR code. The complete kit must be requisitioned and applied.
----------------	--

Code	Explanation
-------------	--------------------

MO - Made at org/AVUM category MF - Made at DS/AVIM category MH - Made at GS category ML - Made at Specialized Repair Activity (SRA) MD - Made at Depot	Items with these codes are not to be requested/requisitioned individually. They must be made from bulk material which is identified by the part number in the description and usable on code (UOC) column and listed in the Bulk Material group of the repair parts list. If the item is authorized to you by the third position code of the SMR code, but the source code indicates it is made at a higher category, order the item from the higher category of maintenance.
--	---

AO - Assembled by org/AVUM category AF - Assembled by DS/AVIM category AH - Assembled by GS category AL - Assembled by Specialized Repair Activity (SRA) AD - Assembled by Depot	Items with these codes are not to be requested/requisitioned individually. The parts that make up the assembled item must be requisitioned or fabricated and assembled at the category of maintenance indicated by the source code. If the third position code of the SMR code authorizes you to replace the item, but the source code indicates the item is assembled at a higher category, order the item from the higher category of maintenance.
---	--

Code	Explanation
XA -	Do not requisition an "XA" coded item. Order its next higher assembly.
XB -	If an "XB" item is not available from salvage, order it using the CAGEC and part number given.
XC -	Installation drawing, diagram, instruction sheet, field service drawing, that is identified by manufacturers part number.
XD -	Item is not stocked. Order an "XD" coded item through normal supply channels using the CAGEC and part number given, if no NSN is available.

NOTE

Cannibalization or controlled exchange, when authorized, may be used as a source of supply for items with the above source codes, except for those source coded "XA" or those aircraft support items restricted by requirements of AR 750-1.

(2) **Maintenance code.** Maintenance codes tell you the category of maintenance authorized to USE and REPAIR support items. The maintenance codes are entered in the third and fourth positions of the SMR code as follows:

(a) The maintenance code entered in the third position tells you the lowest maintenance category authorized to remove, replace, and use an item. The maintenance code entered in the third position will indicate authorization to one of the following categories of maintenance.

Code	Application / Explanation
C -	Crew or operator maintenance done within organizational or aviation maintenance.
O -	Organizational or aviation unit category can remove, replace, and use the item.
F -	Direct support or aviation intermediate category can remove, replace, and use the item.
H -	General support category can remove, replace, and use the item.
L -	Specialized repair activity can remove, replace, and use the item.
D -	Depot category can remove, replace, and use the item.

(b) The maintenance code entered in the fourth position tells whether or not the item is to be repaired and identifies the lowest maintenance category with the capability to do complete repair (i.e., perform all authorized repair functions). This position will contain one of the following maintenance codes.

NOTE

Some limited repair may be done on the item at a lower category of maintenance, if authorized by the Maintenance Allocation Chart (MAC) and SMR codes.

Code	Explanation
O -	Organizational or aviation unit is the lowest category that can do complete repair of the item.
F -	Direct support or aviation intermediate is the lowest category that can do complete repair of the item.
H -	General support is the lowest category that can do complete repair of the item.
L -	Specialized repair activity (designate the specialized repair activity) is the lowest category that can do complete repair of the item.
D -	Depot is the lowest category that can complete repair of the item.
Z -	Non-repairable. No repair is authorized.
B -	No repair is authorized. (No parts or special tools are assigned for the maintenance of a "B" coded item.) However, the item may be reconditioned by adjusting, lubricating, etc., at the user category.

(3) **Recoverability code.** Recoverability codes are assigned to items to indicate the disposition action on unserviceable items. The recoverability code is entered in the fifth position of SMR code as follows:

Recoverability

Code	Application / Explanation
Z -	Non-repairable item. When unserviceable, condemn and dispose of the item at the category of maintenance shown in the third position of SMR code.
O -	Repairable item. When uneconomically repairable, condemn and dispose of the item at organizational or aviation unit category.
F -	Repairable item. When uneconomically repairable, condemn and dispose of the item at direct support or aviation intermediate category.

- H - Repairable item. When uneconomically repairable, condemn and dispose of the item at general support category.
- D - Repairable item. When beyond lower category repair capability, return to depot. Condemnation and disposal of item not authorized below category.
- L - Repairable item. Condemnation and disposal not authorized below specialized repair activity (SRA).
- A - Item requires special handling or condemnation procedures because of specific reasons (e.g., precious metal content, high dollar value, critical material, or hazardous material. Refer to appropriate manuals/directives for specific instructions.

c. *CAGEC (Column (3))*. The Commercial and Government Entity Code (CAGEC) is a 5-digit numeric code which is used to identify the manufacturer, distributor, or Government agency, etc., that supplies the item.

d. *Part Number (Column (4))*. Indicates the primary number used by the manufacturer (individual, company, firm, corporation, or Government activity), which controls the design and characteristics of the item by means of its engineering drawings, specifications, standards, and inspection requirements to identify an item or range of items.

NOTE

When you use an NSN to requisition an item, the item you receive may have a different part number from the part ordered.

e. *Description and Usable on Code (UOC) (Column (5))*. This column includes the following information.

(1) The Federal item name and, when required, a minimum description to identify the item.

(2) The statement "END OF FIGURE" appears just below the last item description in Column (5) for a given figure in both section II and section III.

f. *Qty (Column (6))*. Indicates the quantity of the item used in the breakout shown on the illustration figure, which is prepared for a functional group, sub-functional group, or an assembly. A "V" appearing in this column in lieu of a quantity indicates that the quantity is variable and the quantity may vary from application to application.

EXPLANATION OF COLUMNS (Section IV)

a. *National Stock Number (NSN) Index*.

(1) *Stock number column*. This column lists the NSN by National item identification number (NIIN) sequence. The NIIN consists of the last nine digits of the NSN. When using this column to locate an item, ignore the first four digits of the NSN. When requisitioning items use the complete NSN (13 digits) sequence. The NIIN consists of the last nine digits of the NSN. When requisitioning items use the complete NSN (13 digits).

(2) *Fig. column*. This column lists the number of the figure where the item is identified/located. The illustrations are in numerical sequence in sections II and III.

(3) *Item column*. The item number identifies the item associated with the figure listed in the adjacent Fig. column. This item is also identified by the NSN listed on the same line.

b. *Part Number Index*. Part numbers in this index are listed by part number in ascending alphameric sequence.

(1) *CAGEC column*. This column lists the Commercial and Government Entity Code (CAGEC).

(2) *Part number column*. This column indicates the part number assigned to the item.

(3) *Stock number column*. This column lists the National stock number for the associated part number and manufacturer identified in the part number and CAGEC columns to the left.

(4) *Fig. column.* This column lists the number of the figure where the item is identified/located in sections II and III.

(5) *Item column.* The item number is that number assigned to the item as it appears in the figure referenced in the adjacent figure number column.

c. *Figure and Item Number Index.*

(1) *Fig. column.* This column lists the number of the figure where the item is identified/located in sections II and III.

(2) *Item column.* The item number is that number assigned to the item as it appears in the figure referenced in the adjacent figure number column.

(3) *Stock number column.* This column lists the National stock number for the item.

(4) *CAGEC column.* The Commercial and Government Entity Code (CAGEC) is a 5-digit numeric code used to identify the manufacturer, distributor, or Government agency, etc., that supplies the item.

(5) *Part number column.* Indicates the primary number used by the manufacturer (individual, firm, corporation, or Government activity), which controls the design and characteristics of the item by means of its engineering drawings, specifications, standards, and inspection requirements to identify an item or range of items.

SPECIAL INFORMATION

a. *Associated Publications.* The publications listed below pertain to the FHMUX / Mounting Kit Assembly.

- TM 11-5820-890-10-8 Operators manual
- TM 11-5820-890-20-2 Unit Maintenance Manual
- TM 11-5820-890-30-2 Direct Support Maintenance Manual

b. *Illustrations - Listing.* Only illustrations containing organizational or Direct Support authorized items appear in this RPSTL.

c. *National Stock Numbers.* National stock numbers (NSN's) that are missing from P source coded items have been applied for and will be added to this TM by future change/revision when they are entered in the Army Master Data File (AMDF). Until the NSN's are established and published, submit exception requisitions to: Commander, US Army Communications-Electronics Command and Fort Monmouth, ATTN: AMSEL-LC-COM-R-SR, Fort Monmouth, NJ 07703-5007 for the part required to support your equipment.

HOW TO LOCATE REPAIR PARTS

a. When National stock number or part number is not known.

(1) *First.* Using the table of contents, determine the assembly group or subassembly group to which the item belongs. This is necessary since figures are prepared for assembly groups and subassembly groups, and listings are divided into the same groups.

(2) *Second.* Find the figure covering the assembly group or subassembly group to which the item belongs.

(3) *Third.* Identify the item on the figure and note the item number.

(4) *fourth.* Refer to the Repair Parts List for the figure to find the part number for the item number noted on the figure.

(5) *Fifth.* Refer to the Part Number Index to find the NSN, if assigned.

TM 11-5820-890-23P

b. *When National stock number or part number is known.*

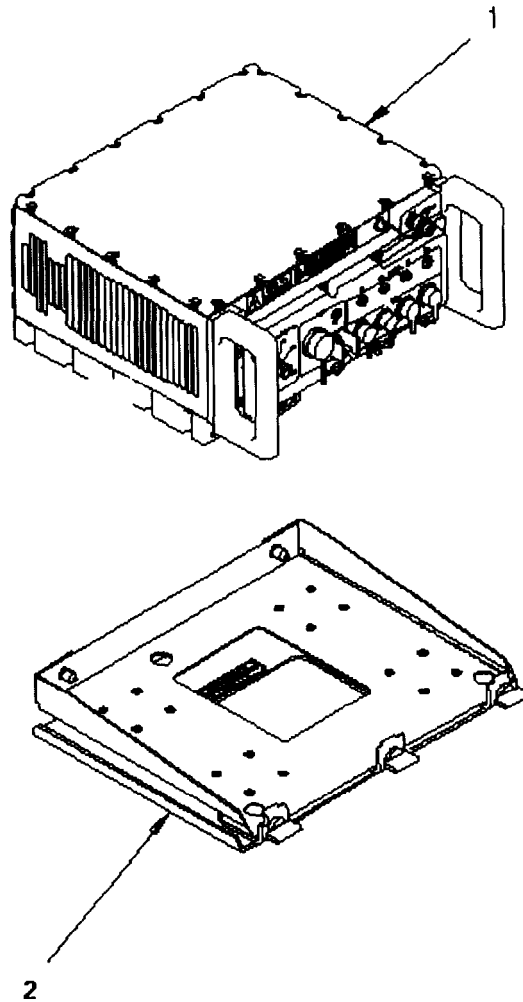
(1) *First.* Using the index of the National stock numbers and part numbers, find the pertinent National stock number or part number. The NSN index is in National item identification number (NIIN) sequence (para 4a(1)). The part numbers in the part number index are listed in ascending alphanumeric sequence (para 4b). Both indexes cross-reference you to the illustration figure and item number of the item you are looking for.

(2) *Second.* After finding the figure and the item number, verify that the item is the one you're looking for, then locate the item number in the repair parts list for the figure.

ABBREVIATIONS

Not applicable.

SECTION II



NOTE: See SB11-131-2 for Installation kits and cables.

Figure 1. FHMUX / Mounting Tray

SECTION II			TM 11-5820-890-23P		(6)	(7)
(1)	(2)	(3)	(4)	(5)		
ITEM NO	SMR CODE	NSN	CAGEC	PART NUMBER	DESCRIPTION AND USABLE ON CODES (UOC)	QTY
					GROW 00 FHWX/MOUNTING TRAY	

FIGURE 1

1	PAOFD	5820013652721	80063	A3155025-5	TD-1456/VRC (SEE FIGURE 2 FOR BREAKDOWN)	1
2	PAOOF	5975014303109	80053	A3154893-2	MT-6845/VRC (SEE FIGURE 11 FOR BREAKDOWN)	1

END OF FIGURE

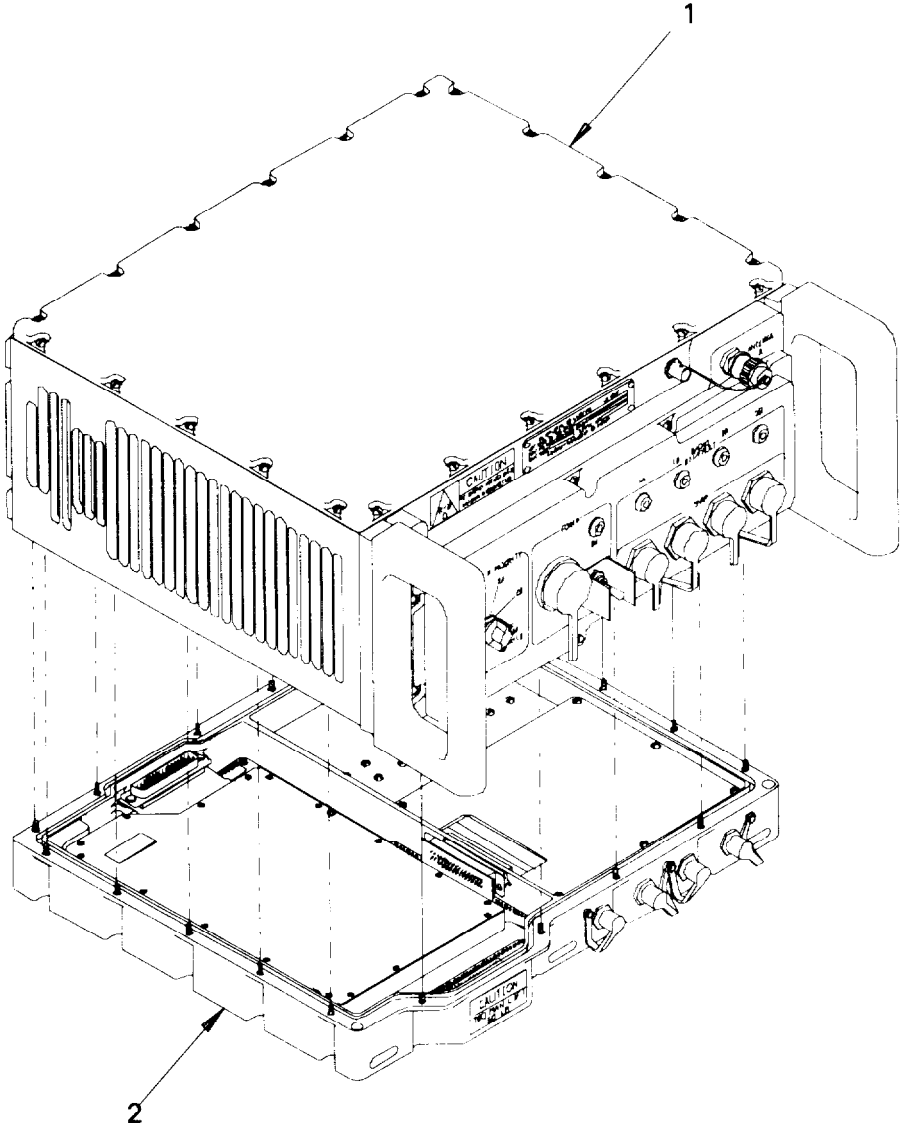


Figure 2. TD-1456 (FHMUX)

SECTION II			TM 11-5820-B90-23P			
(1)	(2)	(3)	(4)	(5)	(6)	(7)
ITEM NO	SMR CODE	NSN	CAGEC	PART NUMBER	DESCRIPTION AND USABLE ON CODES(UOC)	QTY
					GROUP 92 TD/1456/VRC	
					FIGURE 2	
1	XBFFD		80063	A3251950	MATRIX, COMMUNICATION MATRIX PARAPLEX ASSEMBLY(SEE FIGURE 3 FOR B R E A K D O W N)	1
2	XBFFD		80063	A3251960	POWER SUPPLY-SYNCHR CONFLICT, CONTROL AND POWER SUPPLY ASSEMBLY (SEE FIGURE 9 FOR BREAKDOWN)	1
END OF FIGURE						

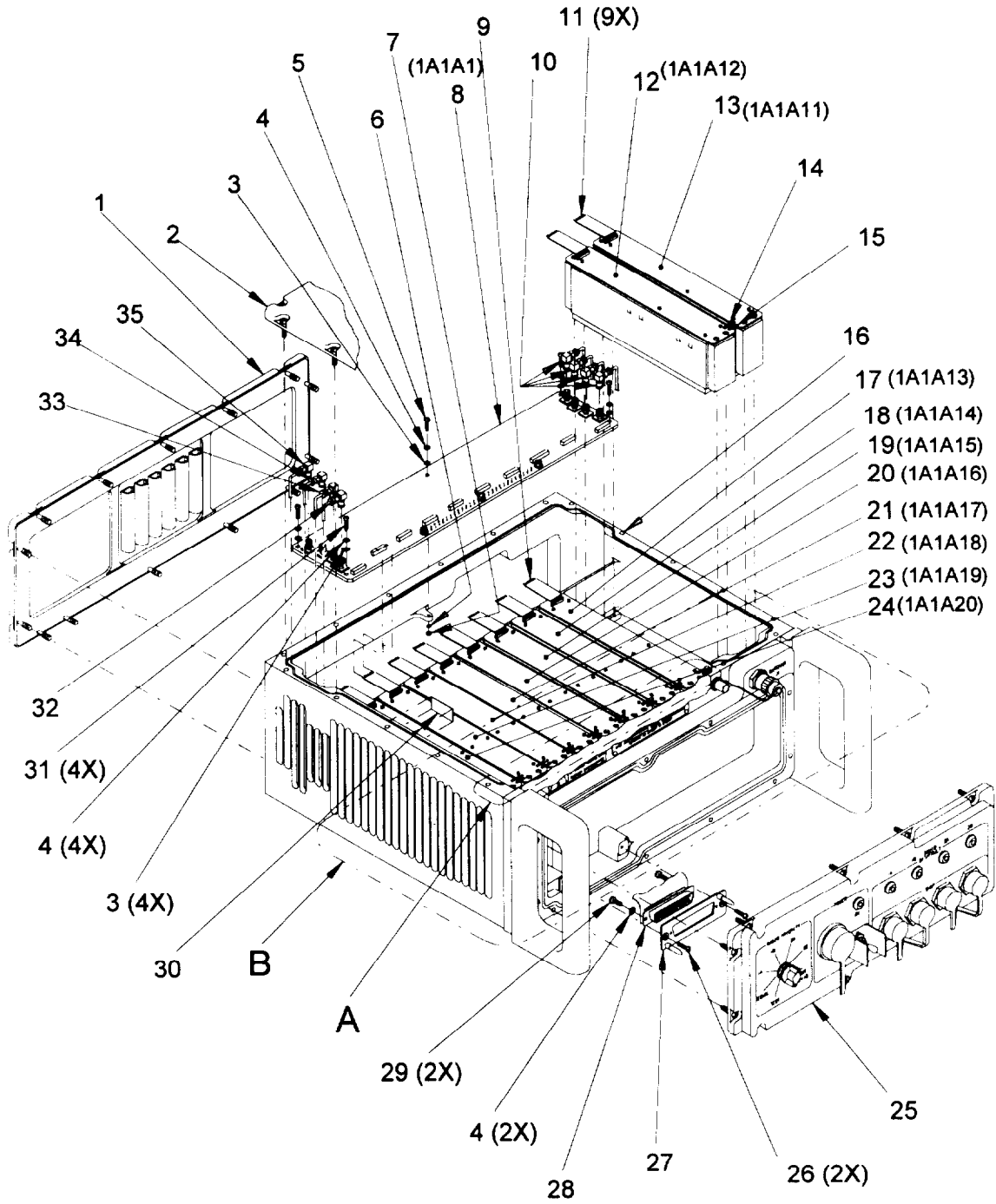
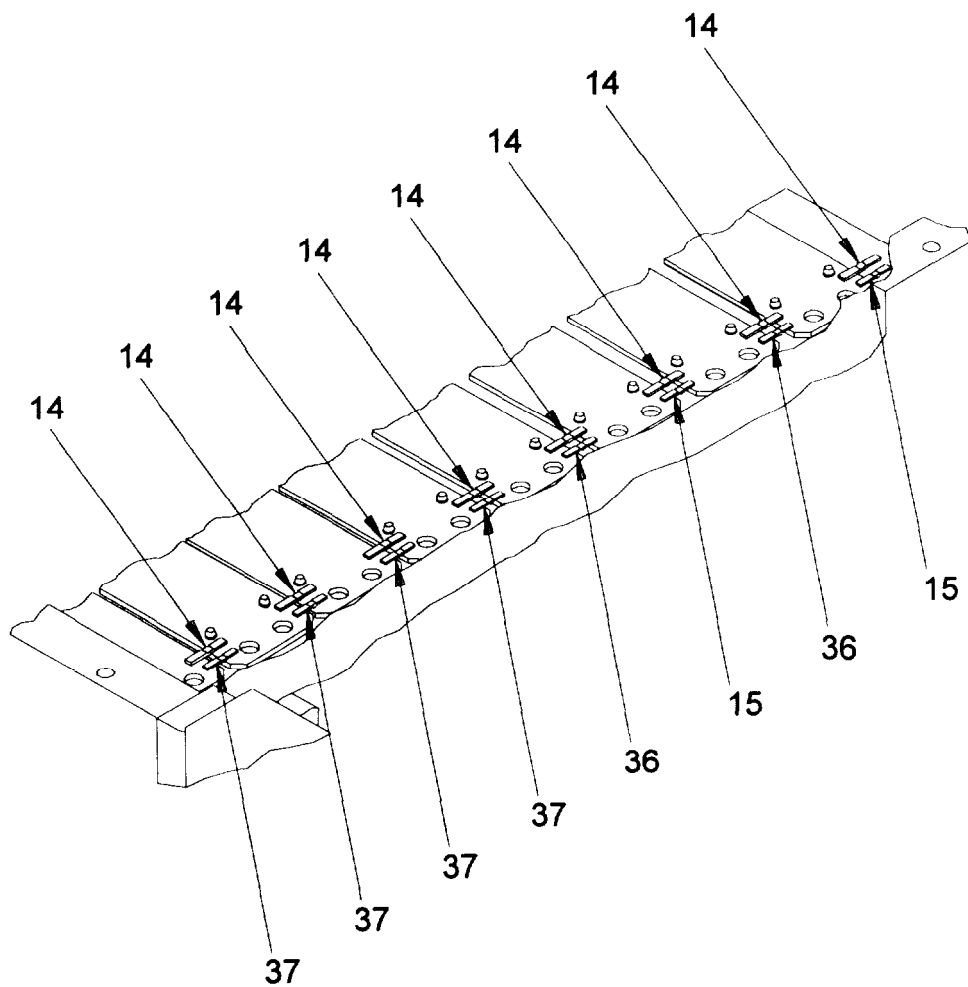


Figure 3. Matrix Paraplex Assembly (sheet 1 of 5)



A

Figure 3. Matrix Paraplex Assembly (sheet 2 of 5)

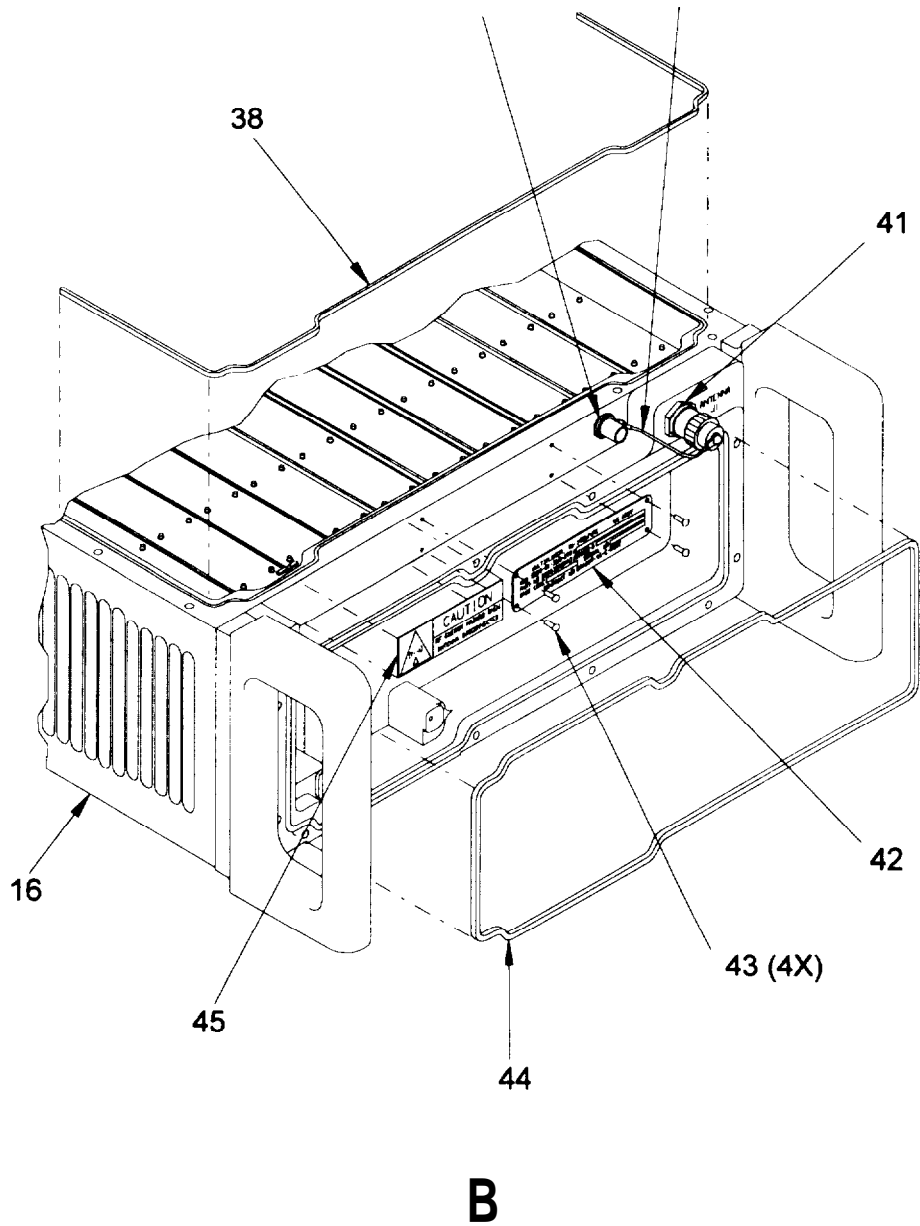


Figure 3. Matrix Paraplex Assembly (sheet 3 of 5)

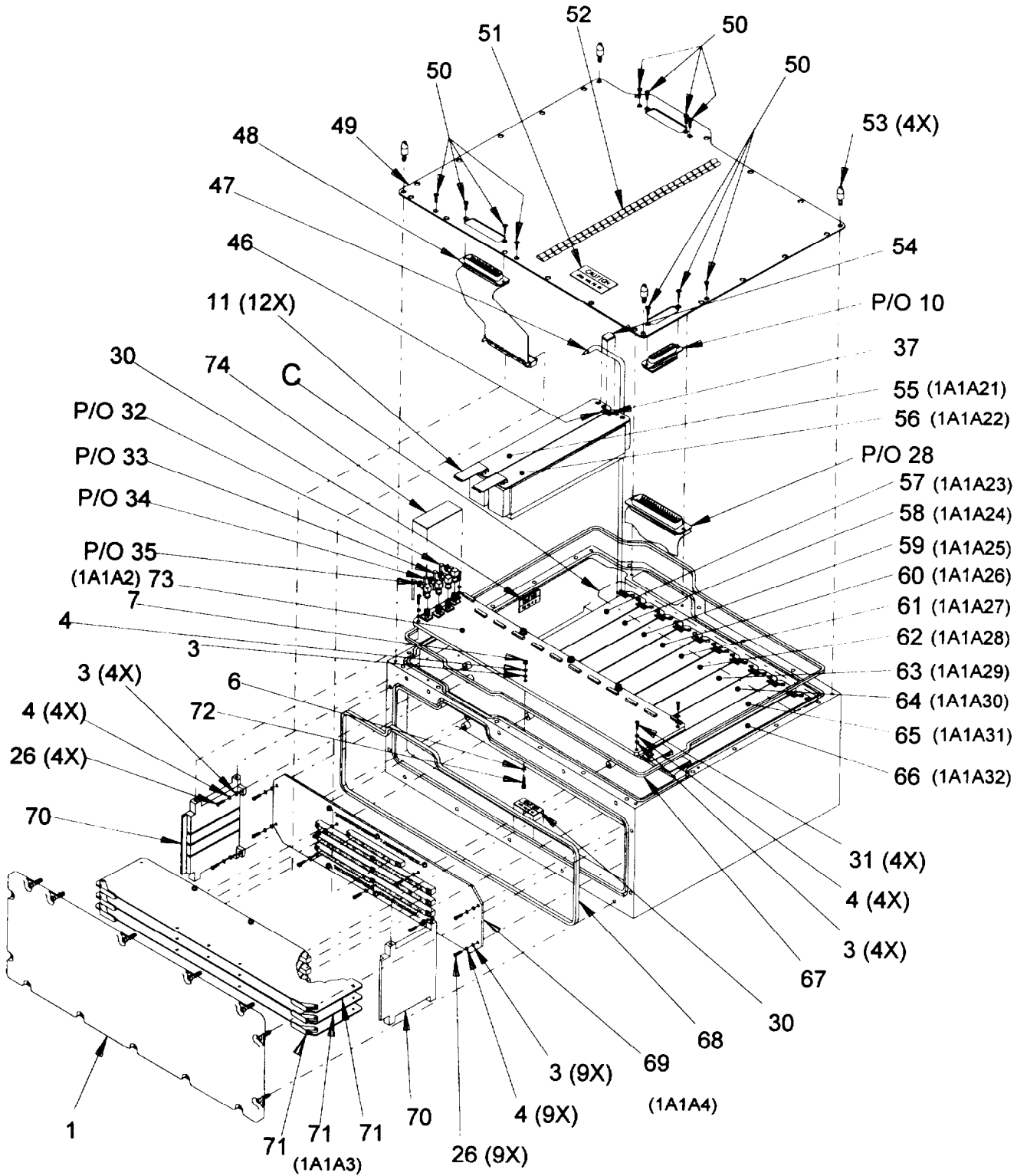
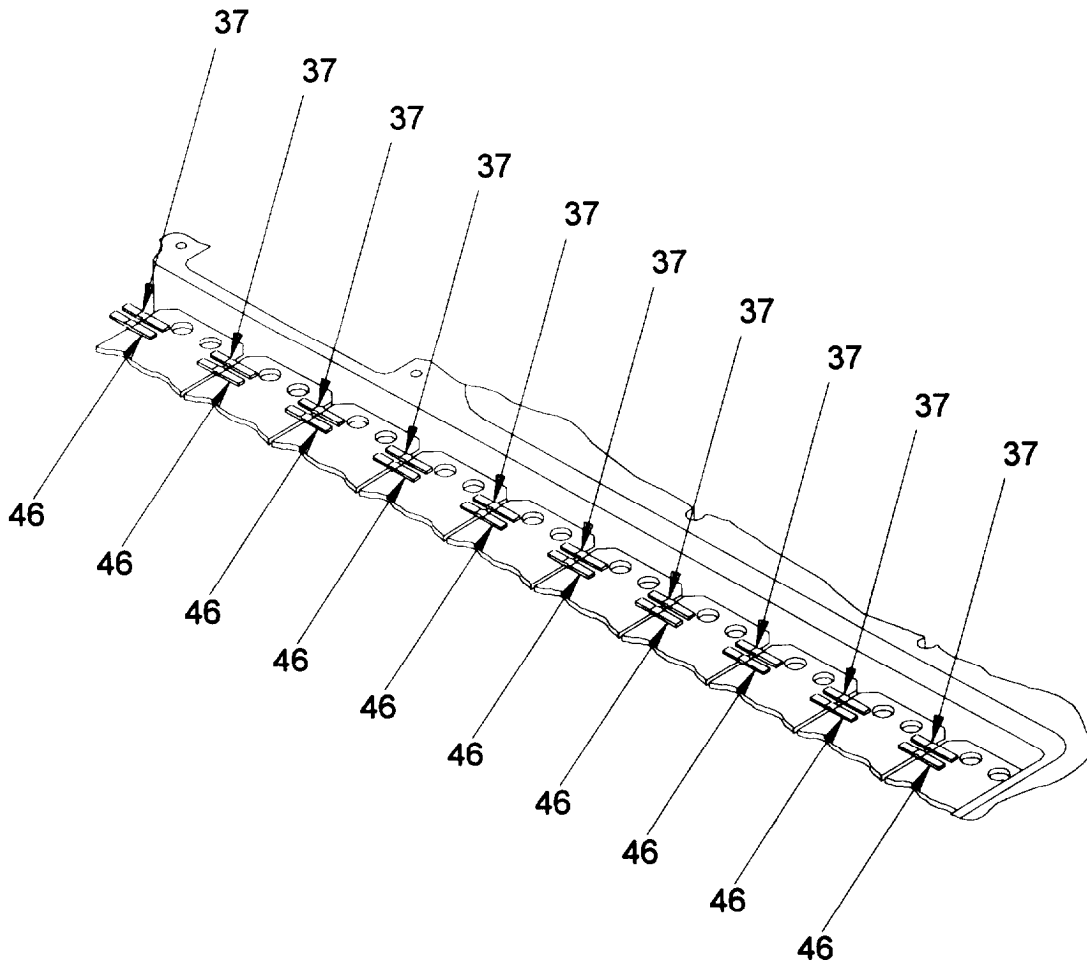


Figure 3. Matrix Paraplex Assembly (sheet 4 of 5)



C

Figure 3. Matrix Paraplex Assembly (sheet 5 of 5)

SECTION II			TM 11-5820-890-23P			
(1)	(2)	(3)	(4)	(5)	(6)	(7)
ITEM NO	SMR CODE	NSN	CAGEC	PART NUMBER	DESCRIPTION AND USABLE ON CODES(UDC) GROUP 9201 MATRIX, PARAPLEX ASSY	QTY
					FIGURE 3	
1	PBFFF	5895014457107	80063	A3190708	COVER, ELECTRONIC CO (SEE FIGURE 4 FOR BREAKDOWN)	1
2	PBFFF	5895014457076	80063	A3190707	COVER, ELECTRONIC CO SEE FIGURE 5 FOR BREAKDOWN	1
3	PAFZZ	5310007239679	80205	NAS820C4L	WASHER, FLAT	23
4	PAFZZ	5310009338118	96906	MS35338-135	WASHER, LOCK	25
5	PAFZZ	5305000545852	98906	MS51957-18	SCREW, MACHINE	1
6	PAFZZ		96906	MS51957-804	SCREW MACHINE	2
7	PAFZZ	5310009349748	96906	MS35649244	NUT, PLAIN, HEXAGON	2
8	PAFZZ	5998014226516	80063	A3251859	CIRCUIT CARD ASSEMB LOW FREQ SWITCH MATRIX(CAUTION STATIC SENSITIVE)	1
9	PAFZZ	6145014508395	80063	A3252074-2	CABLE, SPECIAL, PURPOSE	1
10	PAFZZ		80003	A3154845	CONNECTOR, RECEPTACLE CIRCUIT CARD ASSEMBLY, CONNECTOR	1
11	PAFZZ	5995014475127	80063	A3252074-1	CABLE, SPECIAL PURPOSE	21
12	PAFEZ	599014242268	80063	A3252001-2	RESONATOR, MAGNETOST (CAUTION STATIC SENSITIVE)	
13	PAFZZ	5999014237003	80063	A3252001-1	RESONATOR, MAGNETOST, (CAUTION-STATIC SENSITIVE)	1
14	PAFZZ	5340014461098	80083	A3154976-11	CONTACT, ELECTRICAL	9
15	PAFZZ	5340014461096	80063	A3154978-13	CONTACT, ELECTRICAL	3
16	XBFFF		80063	A3251952	HOUSING, ELECTRONIC MATRIX CHASSIS ASSY (SEE FIGURE 6 FOR BREAKDOWN)	1
17	PAFZZ	5999014238850	80063	A3252004	RESONATOR, MAGNETOST (CAUTION STATIC SENSITIVE)	1
18	PAFZZ	5999014234447	80063	A3252001-4	RESONATOR, MAGNETOST (CAUTION STATIC SENSITIVE)	1
19	PAFZZ	5999014237004	80063	A3252001-5	RESONATOR, MAGNETOST (CAUTION STATIC SENSITIVE)	1
20	PAFZZ	5999014238849	80063	A3252000-1	RESONATOR, MAGNETOST (CAUTION STATIC SENSITIVE)	1
21	PAFEZ	5999014238852	80063	A3252000-2	RESONATOR, MAGNETOST, (CAUTION STATIC SENSITIVE)	1
22	PAFZZ	5999014238851	80063	A3252000-3	RESONATOR, MAGNETOST (CAUTION STATIC SENSITIVE)	1
23	PAFZZ	5999014237005	80063	A3252000-4	RESDNATOR, MAGNETOST (CAUTION STATIC SENSITIVE)	1
24	PAFZZ	5999014258019	80063	A3252005	RESDNATOR, MAGNETOST (CAUTION STATIC SENSITIVE)	
25	XBFFF		80063	A3252006	PANEL, CONTROL, ELECT FRONT (SEE FIGURE 7 FOR BREAKDOWN)	1
26	PAFZZ	530500045648	96906	MS51957-14	SCREW, MACHINE	17
27	XBFFF		80063	A3190766	GUIDE, ELECTRICAL CO	1
28	PAFZZ	5995014499958	80063	A3190754	CABLE, ASSEMBLY, PRINT	1
29	PAFZZ	5305000545046	96906	MS51957-12	SCREW, MACHINE	2
30	XBFFF		80063	A3205024	MARKER, IDENTIFICATION	3
31	PAFZZ	5305000545649	96906	MS51957-15	SCREW, MACHINE	23

SECTION II			TM 11-5820-890-23P			
(1)	(2)	(3)	(4)	(5)	(6)	(7)
ITEM NO	SMR CODE	NSN	CAGEC	PART NUMBER	DESCRIPTION AND USABLE ON CODES(UOC)	QTY
32	PAFZZ	5995014455193	80063	A3251974-4	CABLE ASSEMBLY, RF	1
33	PAFZZ	5995014455208	80083	A3251974-3	CABLE ASSEMBLY, RADI	1
34	PAFZZ	5995014455206	80063	A3251974-2	CABLE ASSEMBLY, RF	1
35	PAFZZ	5995014455226	80063	A3251974-1	CABLE ASSEMBLY, RF	1
36	PAFZZ	5340014306982	61742	A3154976-2	PLATE, MOUNTING	2
37	PAFZZ	5340014460976	80063	A3154976-7	CONTACT, PLUG, ELECTR	15
38	PAFZZ	5999014327707	80063	A3173108-3	SHIELDING GASKET, EL	1
39	PAOZZ	5935014471120	80063	A3251938	CONNECTOR, RECEPTAC	1
40	PAOZZ	5985014459078	80063	A3251963	COVER, ELECTRICAL LO (50 OHM TERMINATION)	1
41	PAFZZ	5920014471445	80063	A3251964	CONNECTOR, ASSEMBLY	1
42	XBFZZ		80063	A3252043	PLATE, IDENTIFICATION	1
43	XBFZZ	5305002535603	96906	MS21318-1	SCREW, DRIVE	4
44	PAFZZ	5999014455668	80063	A3173108-6	SHIELDING GASKET, EL	1
45	XBFZZ		80063	A3173033	MAKER, IDENTIFICATI	1
46	PAFZZ	534001446109	80063	A3154976-12	CONTACT, ELECTRICAL	11
47	PAFZZ	5995014455194	80063	A3154902	CABLE ASSEMBLY, RAD	1
48	PAFZZ	5995014508675	80063	A3190740	CABLE ASSEMBLY, PRIN	1
49	XBFZZ		80063	A3173128	PLATE, ELECTRICAL SH	1
50	PAFZZ	5305009939189	96906	MS24693-c2	SCREW, MACHINE	11
51	XBFZZ		80063	A3154956	MAKER, IDENTIFICATI	1
52	PAFZZ	5999014317323	80063	A3154964	SHIELDING GASKET	1
53	PAFZZ	5340014308852	OMW11	A3155024	STANDOFF, THREADED,	4
55	PAFZZ	5999014226518	80063	A3252002-1	RESONATOR, MAGNETOST (CAUTION STATIC SENSITIVE)	1
56	PAFZZ	599901422845s	80063	A3252002-2	RESONATOR, MAGNETOST (CAUTION STATIC SENSITIVE)	1
57	PAFZZ	5999014228456	80063	A3252002-3	RESONATOR, MAGNETOST (CAUTION STATIC SENSITIVE)	1
58	PAFZZ	5999014226524	80063	A3252002-4	RESONATOR, MAGNETOST (CAUTION STATIC SENSITIVE)	1
59	PAFZZ	5999014226423	80063	A3252002-5	RESONATOR, MAGNETOST (CAUTION STATIC SENSITIVE)	1
60	PAFZZ	5999014226424	80063	A3252002-6	RESONATOR, MAGNETOST (CAUTION STATIC SENSITIVE)	1
61	PAFZZ	5999014228458	80063	A3252002-7	RESONATOR, MAGNETOST (CAUTION STATIC SENSITIVE)	1
62	PAFZZ	5999014228457	80063	A3252002-8	RESONATOR, MAGNETOST, (CAUTION STATIC SENSITIVE)	1
63	PAFZZ	5999014228459	80063	A3252002-9	RESONATOR, MAGNETOST (CAUTION STATIC SENSITIVE)	1
64	PAFZZ	5999014228461	80063	A3252002-10	RESONATOR, MAGNETOST (CAUTION STATIC RESTIVE)	1
65	PAFZZ	5999014228460	80063	A3252002-11	RONATOR, MAGNETOST (CAUTION STATIC SENSITIVE)	1
66	PAFZZ	5999014226425	80063	A3252003	RESONATOR, MAGNETOS (CAUTION STATIC SENSITIVE)	1
67	PAFZZ	5999014455684	80063	A3173108-7	SHIELDING GASKET, EL	1
68	PAFZZ	5999014455689	80063	A3173108-8	SHIELDING GASKET, EL	1
69	PAFZZ	5998014229779	80063	A3251874	CIRCUIT CARD ASSEMB (CAUTION	1

SECTION II			TM 11-5820-890-23P			
(1)	(2)	(3)	(4)	(5)	(6)	(7)
ITEM NO	SMR CODE	NSN	CAGEC	PART NUMBER	DESCRIPTION AND USABLE ON CODES(UDC)	QTY
70	XBFZZ		80063	A3251952	STATIC SENSITIVE)	
71	PAFDD	5998014225520	80063	A3251859	SUPPORT, ELECTRICAL	2
					CIRCUIT CARD ASSEMB PIN DIODE	3
					DRIVER(CAUTION STATIC SENSITIVE)	
72	PAFZZ		80063	A3252100	SCREW MACHINE	1
73	PAFZZ	5998014226519	80063	A3251854	CIRCUIT CARD ASSEMB HIGH FREQ	1
					SWITCH MATRIX(CAUTIONSTATIC SENSITIVE)	

END OF FIGURE

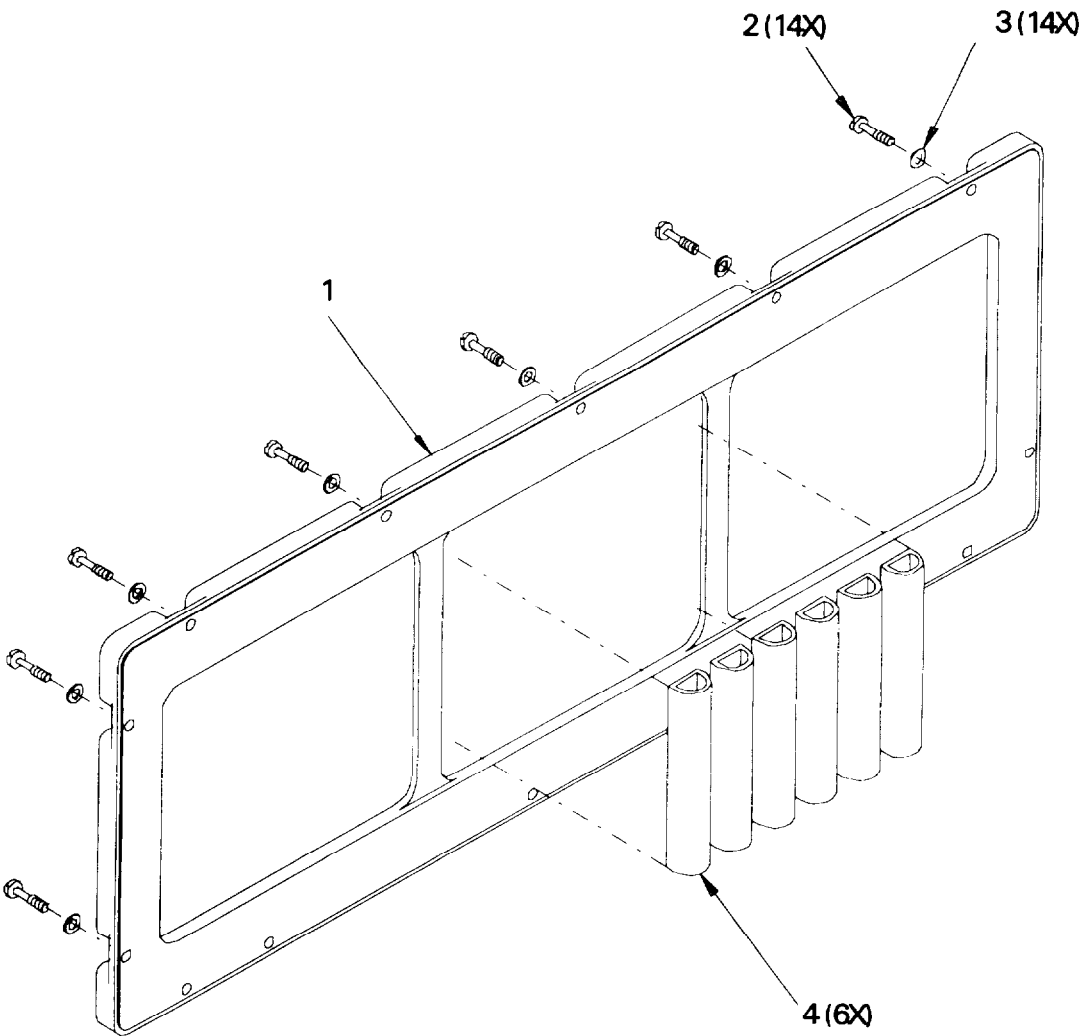


Figure 4. Rear Cover Assembly

SECTION II			TM 11-5820-890-23P			
(1)	(2)	(3)	(4)	(5)	(6)	(7)
ITEM NO	SMR CODE	NSN	CAGEC	PART NUMBER	DESCRIPTION AND USABLE ON CODES(UOC)	QTY
GROUP 920101 REAR COVER ASSY						
FIGURE 4						
1	XBFZZ		80083	A31731 14	COVER, ELECTRONIC CO	1
2	PAFZZ	5306014471739	80063	A3173086	SCREW, EXTERNALLY, RE	14
3	XDFZZ		80205	NAS620C10LP	WASHER, FLAT	14
4	XBFZZ		81348	ZZR765/33-001F3	RUBBER STRIP	6

END OF FIGURE

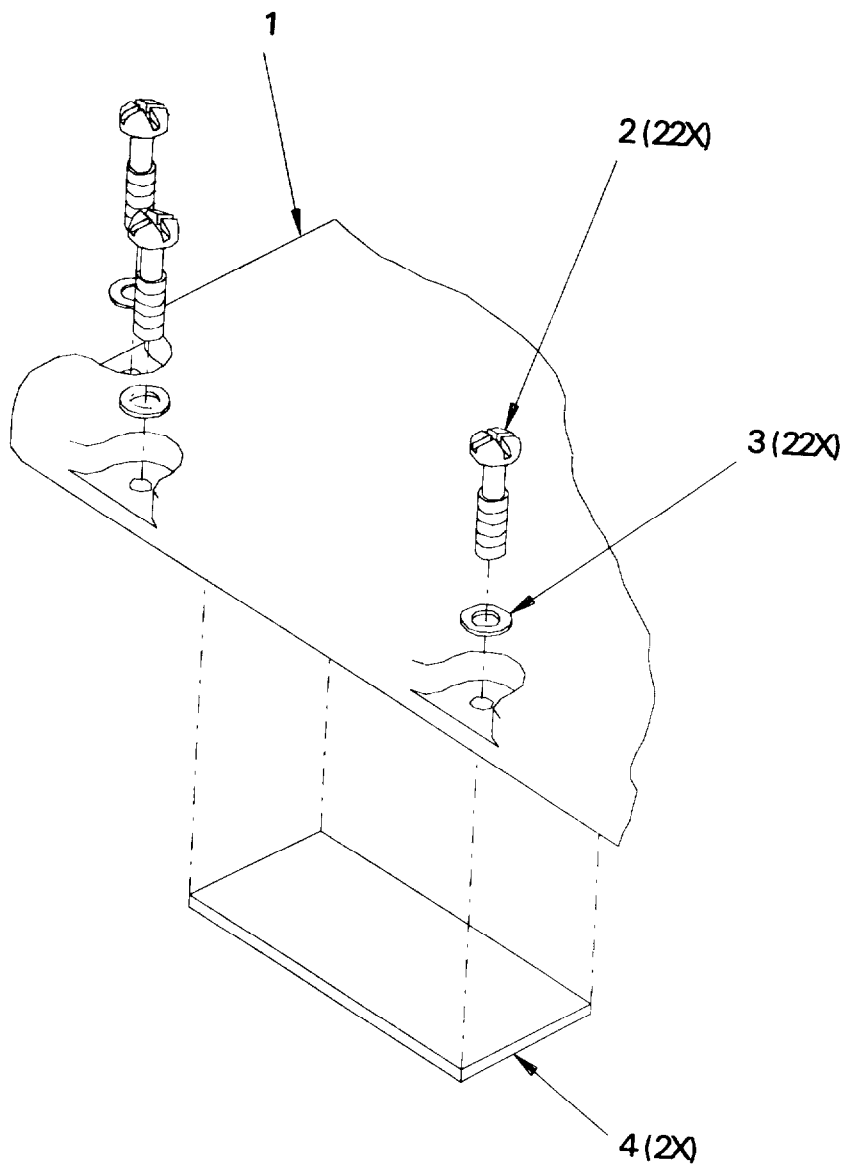


Figure 5. Top Cover Assembly

SECTION II			TM 11-5820-890-23P			
(1)	(2)	(3)	(4)	(5)	(6)	(7)
ITEM NO	SMR CODE	NSN	CAGEC	PART NUMBER	DESCRIPTION AND USABLE ON CODES(UOC)	QTY
					GROUP 920102 TOP COYER ASSY	
					FIGURE 5	
1	XBFU		80083	A3173115	COVER, ELECIRONIC CO	1
2	PAFZZ	5305014292030	96906	MS51890-19B	SCREW, EXTERNALLY RE	22
3	PAFZZ		80205	NAS620C10LP	WASHER, FLAT	22
4	XBFZZ		80083	A3173109	RUBBER STRIP	2

END OF FIGURE

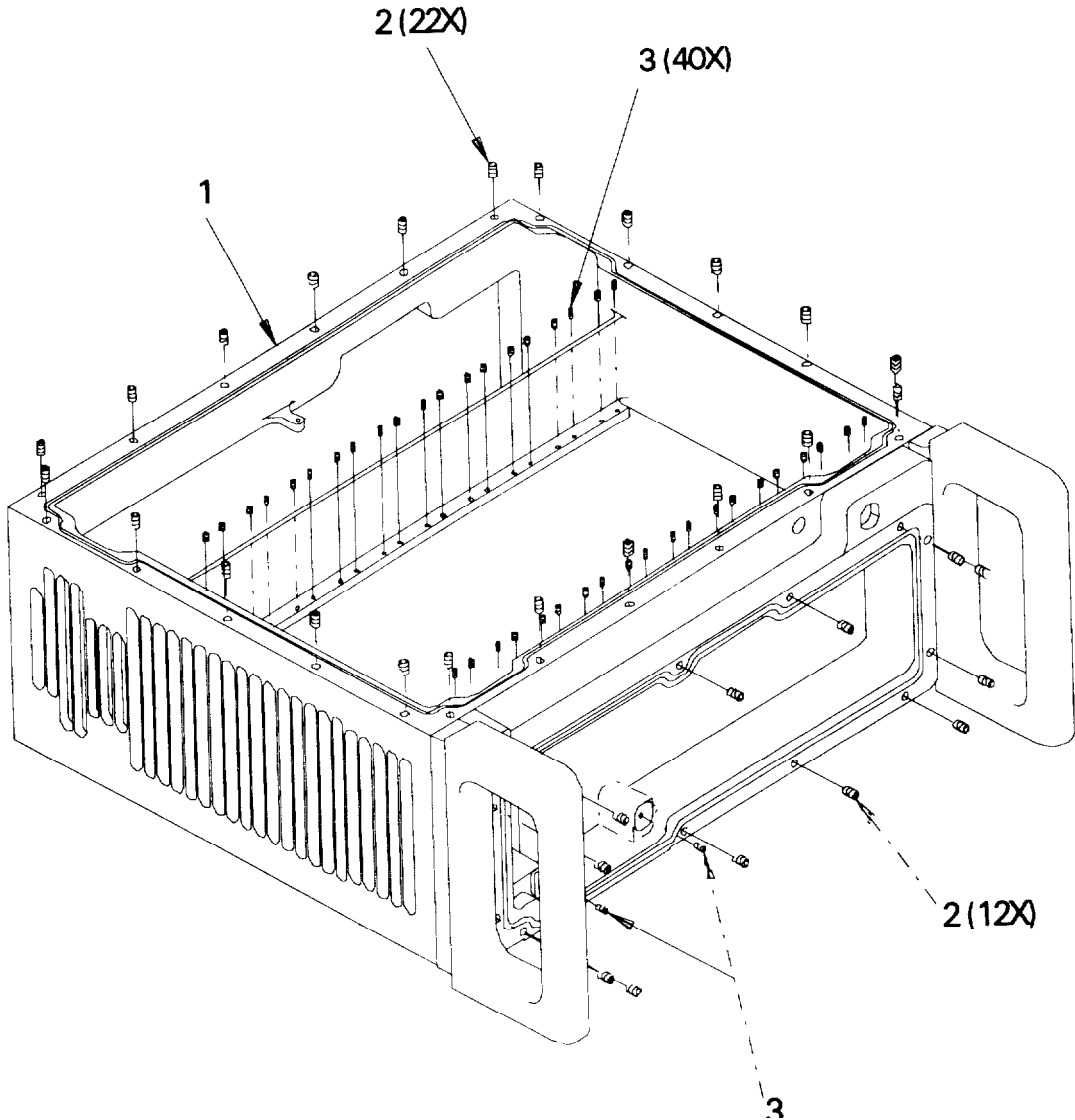


Figure 6. Matrix Chassis Assembly (1 of 2)

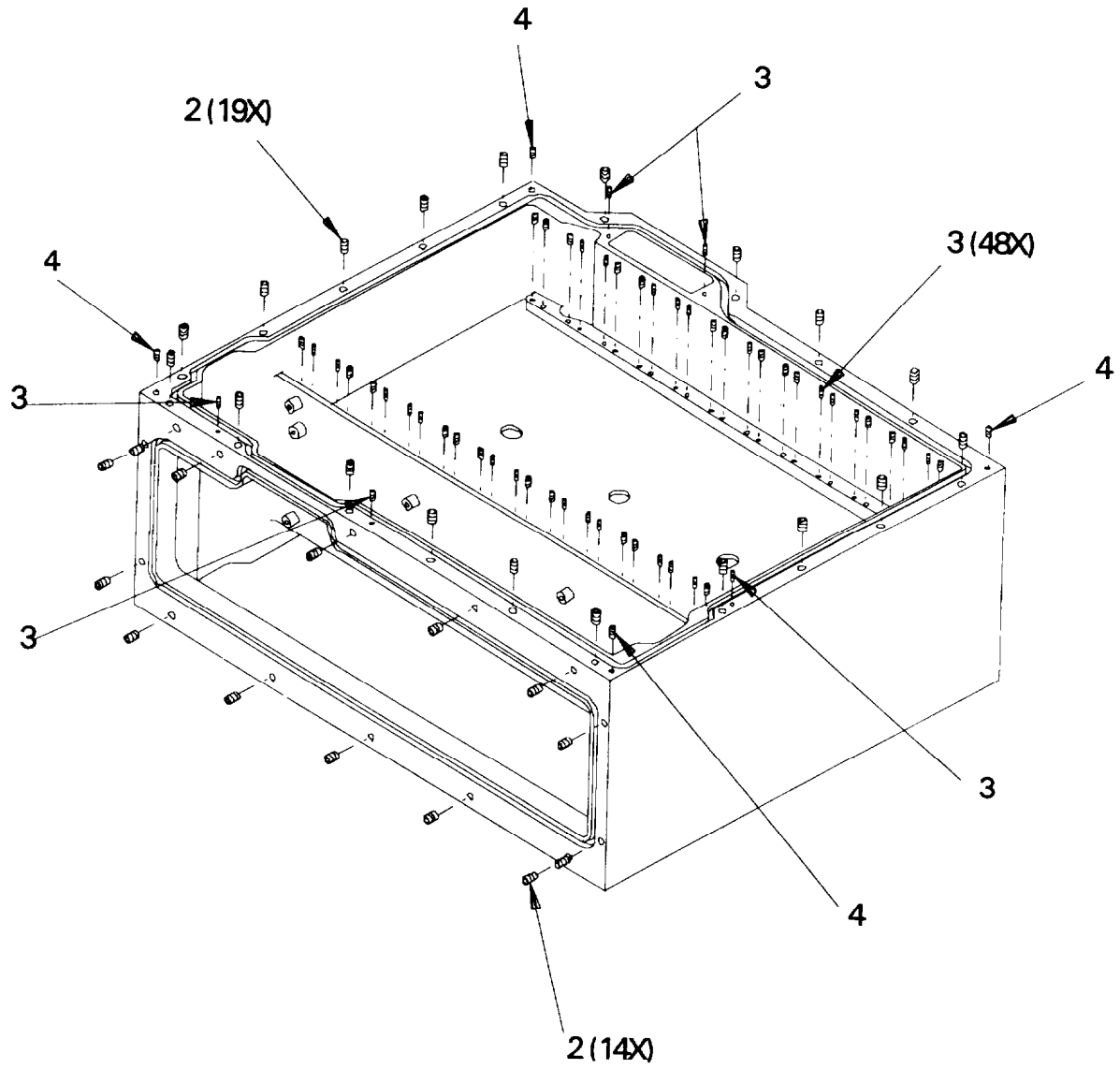


Figure 6. Matrix Chassis Assembly (2 of 2)

SECTION II			TM 11-5820-890-23P		(6)	(7)
(1)	(2)	(3)	(4)	(5)		
ITEM NO	SMR CODE	NSN	CAGEC	PART NUMBER	DESCRIPTION AND USABLE ON CODES(UOC)	QTY
GROUP 920103 MATRIX CHASSIS ASSY						
FIGURE 6						
1	XBFZZ		80063	A3251953	HOUSING, ELECTRONIC	1
2	PAFZZ	5325013955075	96906	MS21209C1-10L	INSERT, SCREW THREAD	67
3	PAFZZ	5325010114140	96906	MS21209C0410L	INSERT, SCREW THREAD	95
4	PAFZZ	5325003768648	96906	MS21209C0815L	INSERT, SCREW THREAD	4

END OF FIGURE

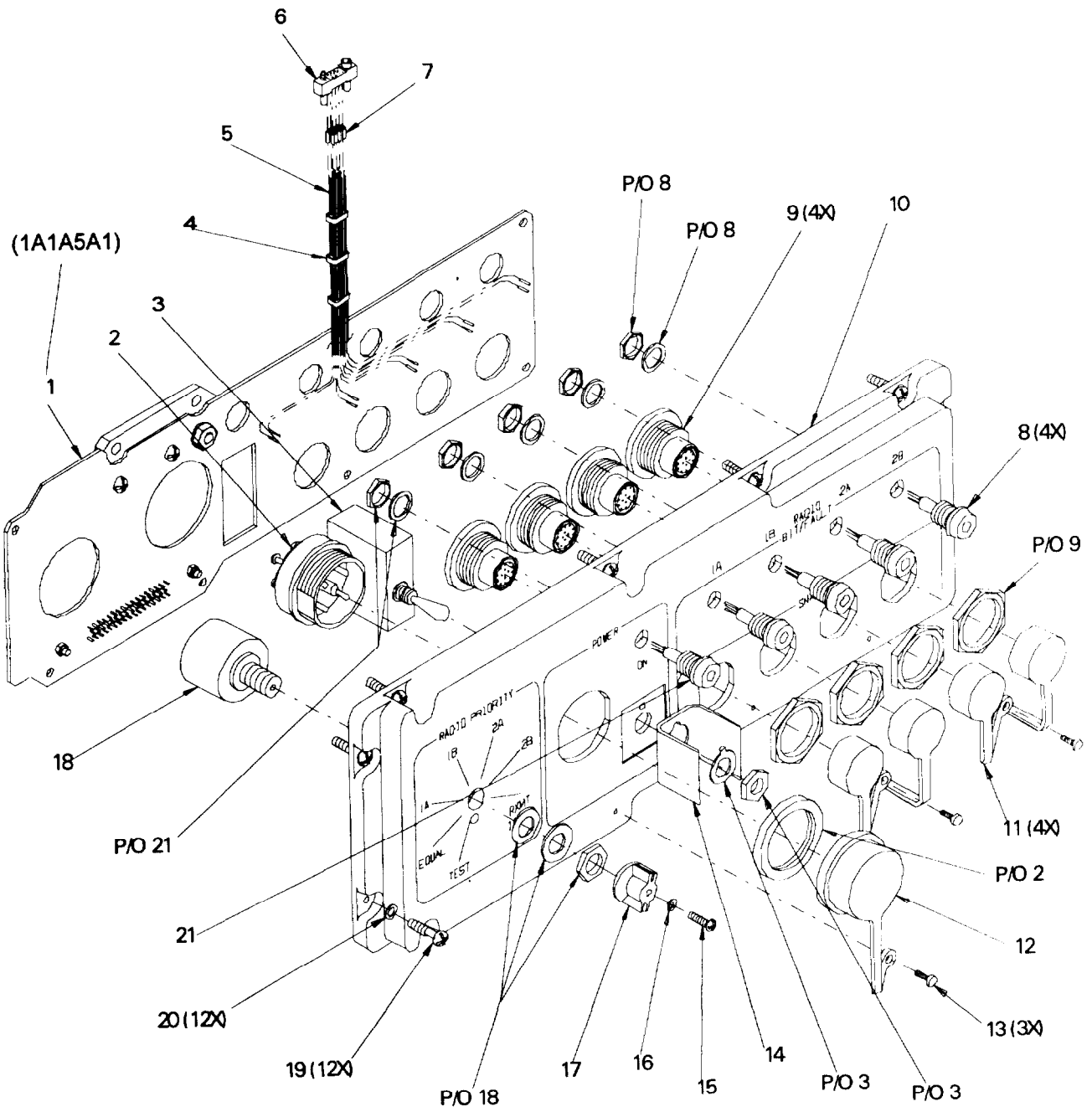


Figure 7. Front Panel Assembly (1 of 2)

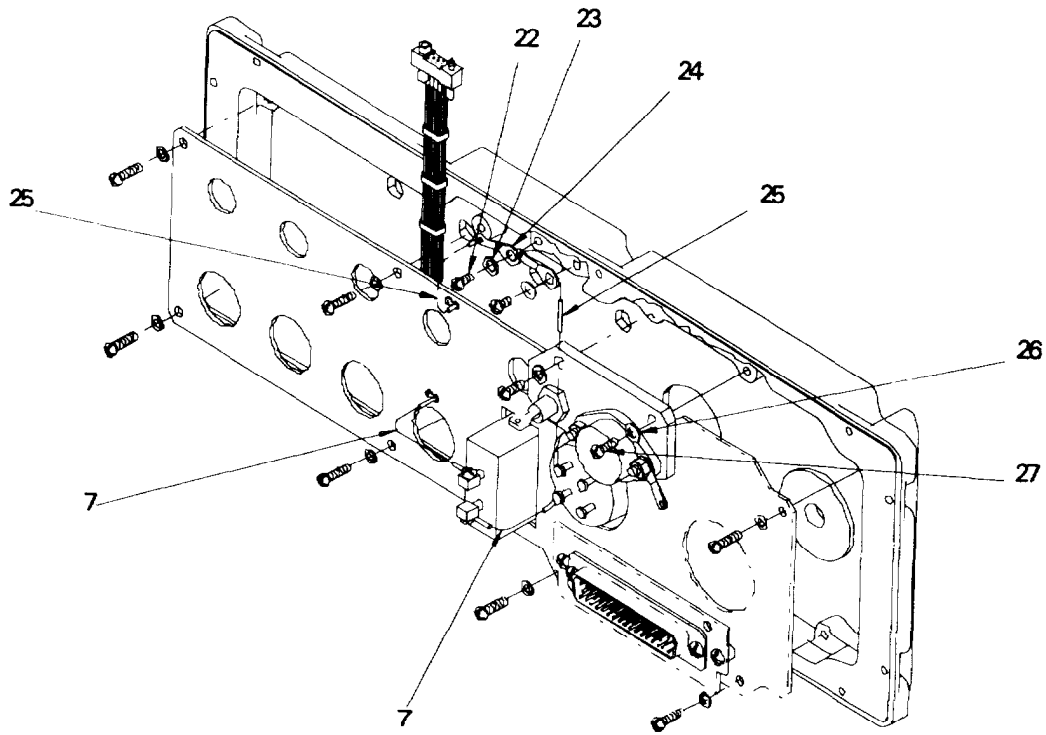


Figure 7. Front Panel Assembly (2 of 2)

SECTION II			TM 11-5820-890-23P			
(1)	(2)	(3)	(4)	(5)	(6)	(7)
ITEM NO	SMR CODE	NSN	CAGEC	PART NUMBER	DESCRIPTION AND USABLE ON COOES(UOC)	QTY
GROUP 920104 FRONT PANEL ASSY						
FIGURE 7						
1	PAFZZ	5998014226517	80063	A3251879	CIRCUIT CARD ASSEMB PRINTED WIRING BOARD ASSEMBLY, FRONT PANEL (CAUTION-STATIC SENSITIVE)	1
2	PAFZZ	5935013789152	81349	M55181/2-01	CONNECTOR, RECEPTACLE	1
3	PAFZZ	5925011110651	81349	M39019/01-327	CIRCUIT BREAKER	1
5	XBDZZ		81349	M22759/11-24-9	WIRE, ELECTRICAL	50
6	XBFZZ		80063	A3251969-3	CONNECTOR, PLUG, ELECTRIC	1
7	XBDZZ	597D0008122974	81349	M23053/5-103-0	INSULATION SLEEVING	6
8	PAFZZ	5980014428537	03723	87019102	LIGHT EMITTING DIODE	4
9	PAFZZ	5935014467576	80063	A3251966	CONNECTOR ASSEMBLY	4
10	XBFFF		80063	A3252007	COVER, ELECTRONIC CO (SEE FIGURE 8 FOR BREAKDOWN)	1
11	PAOZZ	5340014453385	80063	A3252050-2	CAP, PROTECTIVE, DUST	4
12	PAOZZ	5340014457270	80063	A3252051	CAP, PROTECTIVE, DUST	1
13	PAOZZ	5305014471738	80063	A3173060	SCREW, MACHINE	3
14	XBFZZ		80063	A3154985	GUARD, SWITCH	1
15	PAOZZ	5305004486547	96906	MS51957-278	SCREW, MACHINE	
16	PAOZZ	5310002240747	96906	MS35338-1368	WASHER, LOCK	1
17	PAOZZ	5355005520451	96906	MS91524-9AP3TOX	KNOB	1
18	PAFZZ	5930014461264	80063	A3251967	SWITCH, ROTARY	1
19	PAFZZ	5305014292030	96906	MS51896-19B	SCREW, EXTERNALLY RE	12
20	XDFZZ		80205	NAS620C10LP	WASHER, FLAT	12
21	PAFZA	5980013943371	31757	62036-113	LIGHT EMITTING DIODE	1
22	PAFZZ		80063	A3252101	O-RING	5
23	PAFZZ	5305000546650	96906	MS51957-26	SCREW, MACHINE	9
24	PAFZZ	5310000540041	80205	NAS620C6L	WASHER, FLAT	9
25	PAFZZ	5940008166103	96906	MS77066-2	TERMINAL, LUG	4
26	XBDU	6145009394964	81349	M22759/11-20-9	WIRE, ELECTRICAL	10
27	PAFZZ	5310010771939	80063	A3155012	WASHER, SHOULDERS	2
28	PAFZZ	5305000546652	96906	MS51957-28	SCREW, MACHINE	2

END OF FIGURE

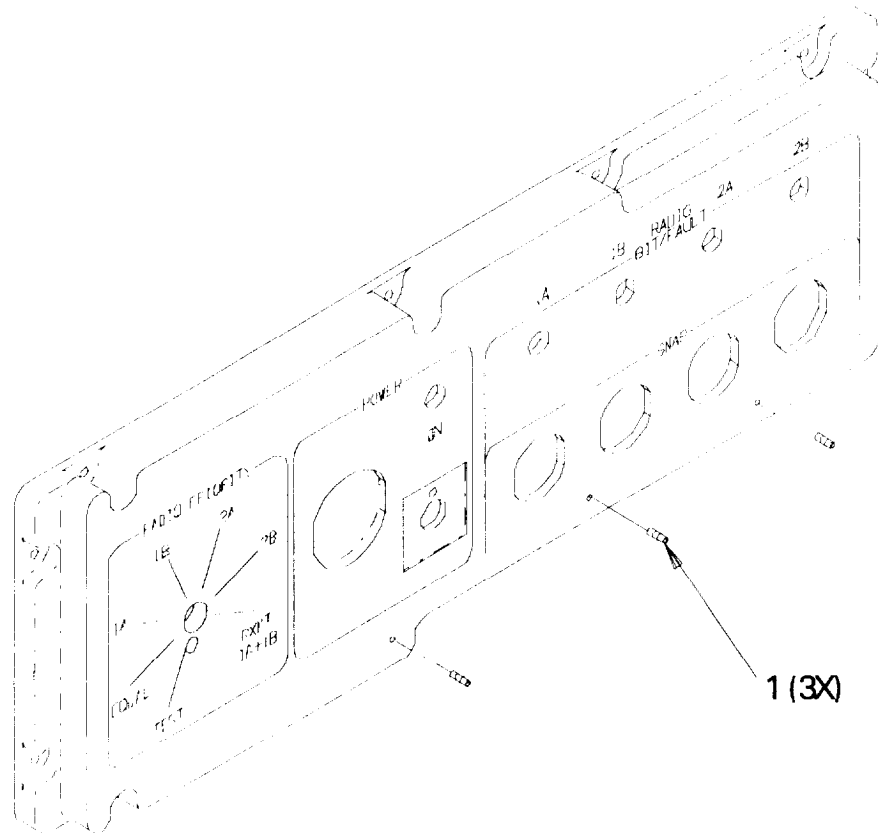


Figure 8. Front Cover Assembly (1 of 2)

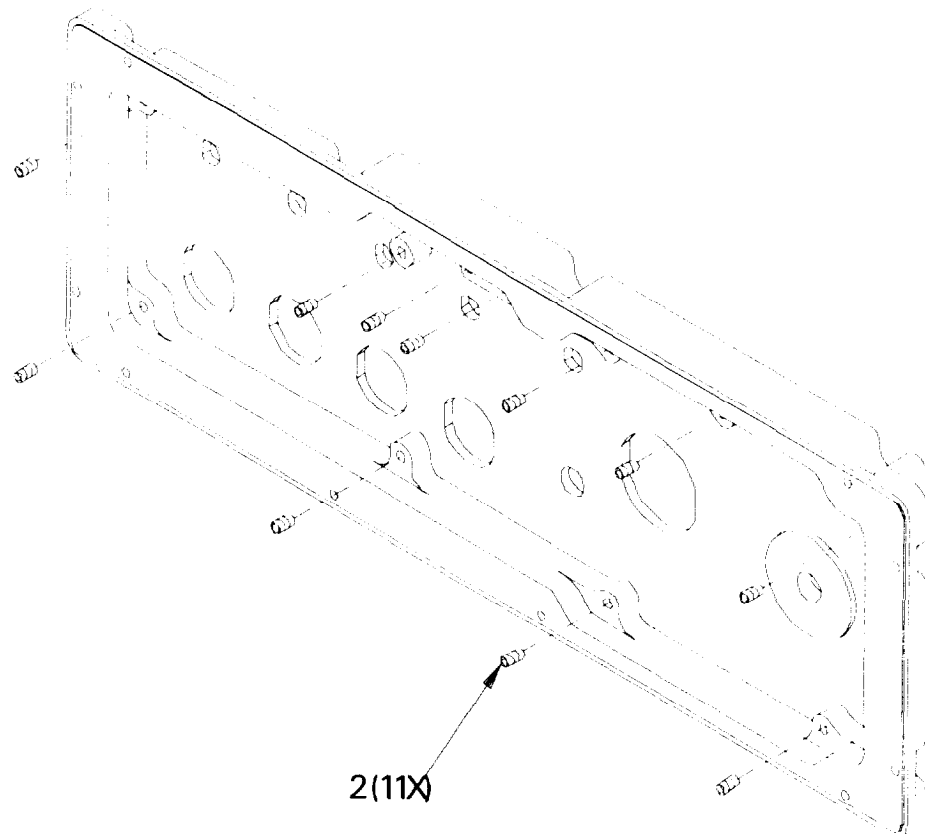


Figure 8. Front Cover Assembly (2 of 2)

SECTION II			TM 11-5820-880-23P		(5)	(7)
(1)	(2)	(3)	(4)	(5)	(5)	(7)
ITEM NO	SMR CODE	NSN	CAGEC	PART NUMBER	DESCRIPTION AND USABLE ON CODES(UOC)	QTY
					GROW 92010401 FRONT COVER ASSY	
					FIGURE 8	
1	PAFZZ	5325003380772	96906	MS21205C0215L	INSERT, SCREW THREAD	3
2	PAFZZ	5325010163358	96906	MS21209C0610L	INSERT, SCREW THREAD	11

END OF FIGURE

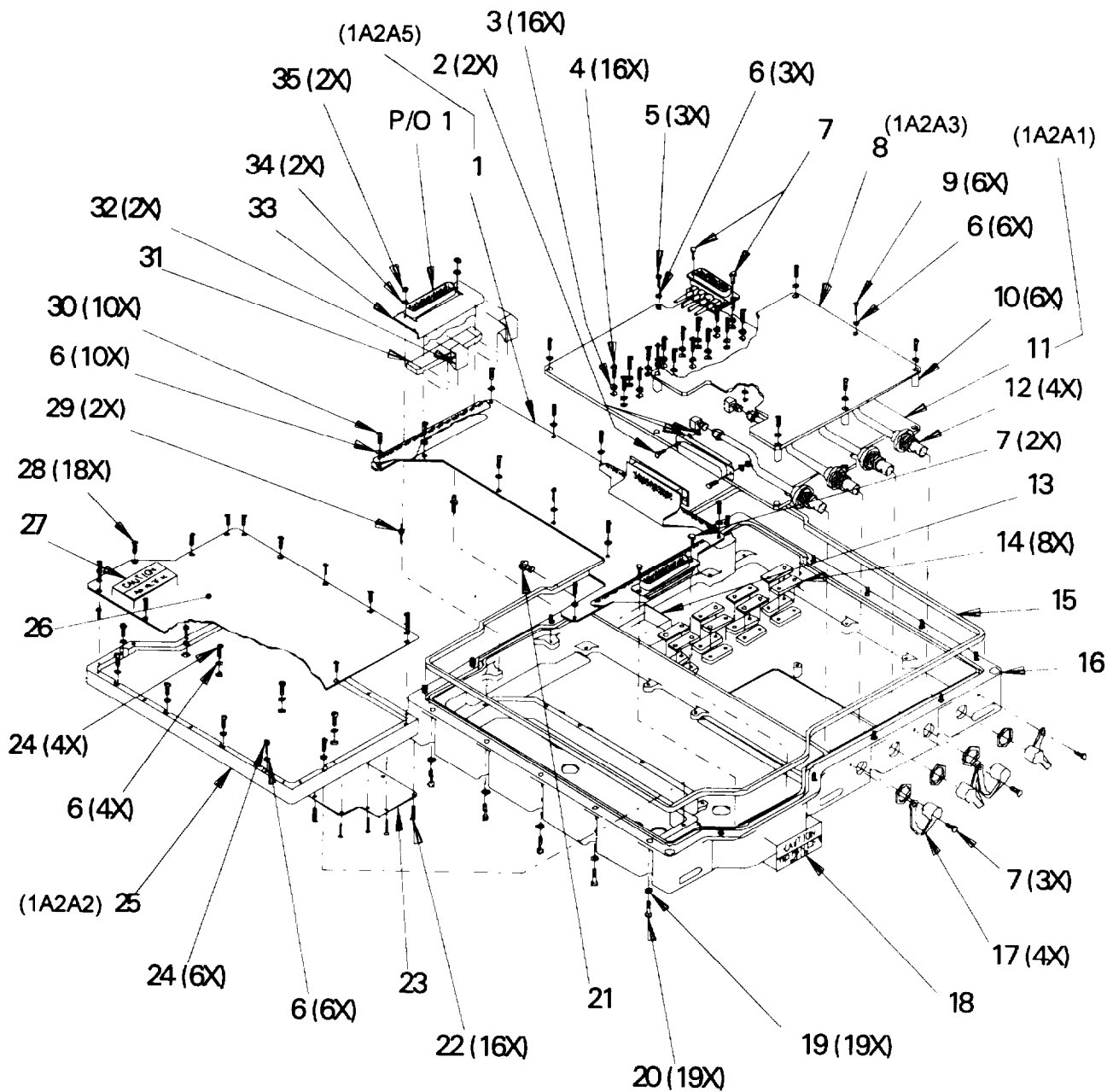


Figure 9. Power Supply Synchronizer

SECTION II			TM 11-5820-890-23P			
(1)	(2)	(3)	(4)	(5)	(6)	(7)
ITEM NO	SMR CODE	NSN	CAGEC	PART NUMBER	DESCRIPTION AND USABLE ON CDEES(UOC)	QTY
					GROUP 9202 POWER SUPPLY SYNCHRONIZER	
					FIGURE 9	
1	PAFDD	5998014226522	80063	A3251899	CIRCUIT CARD ASSEMB CONTROLLER(CAUTION STATIC SENSITIVE)	1
2	PAFZZ	5307011368317	00779	206514-1	STUD, SELF-LOCKING	1
3	PAFZZ	5970005161678	88928	5621-14-31	INSULATOR, WASHER	16
4	PAFZZ	5305000545651	98908	MS51957-17	SCREW, MACHINE	16
5	PAFZZ	5305000545649	96906	MS51957-15	SCREW, MACHINE	3
6	PAFZZ	5310007239876	80206	NAS620C4L	WASHER, FLAT	29
7	PAFZZ	5305014471738	80063	A3173060	SCREW, MACHINE	7
8	PAFZZ	5998014226523	80063	A3251894	CIRCUIT CARD ASSEMB PIN DIODE DRIVER/SYNTHESIZER(CAUTION STATIC SENSITIVE)	1
9	PAFZZ	5305012944308	96906	RS51896-7	SCREW, EXTERNALLY RE	6
10	XBFZZ	5340014306963	61742	A3154918	STANDOFF, THREADED, S	6
11	PAFDD	5998014242269	80063	A3251884	CIRCUIT CARD ASSEMB SUBSTRATE ASSEMBLY, CONFLICT/REVERSE POWER (CAUTION STATIC SENSITIVE)	1
12	PAFZZ	5995014499720	80063	A3251975	CABLE ASSEMBLY, RADI	4
13	XBFZZ		80063	A3205023	MARKER, IDENTIFICATI	1
14	PAFZZ	5365014465328	80063	A3173046	SPACER, SPECIAL, SHAP	8
15	PAFZZ	5999014327711	80063	A3173108-4	SHIELDING GASKET, EL	1
16	XBFFF		80063	A3251954	HOUSING ,ELECTRONIC CORP COVER ASSY (SEE FIGURE 10 FOR BREAKDOWN)	1
17	PAOZZ	5340014465090	80063	A3252050-1	CAP, PROTECTIVE, DUST	4
18	XBFZZ		80063	A3154986	MARKER, IDENTIFICATI	1
19	PAFZZ	5310014199007	80205	NAS620C10LP	WASHER, FLAT	19
20	PMFZZ	5305013523297	96906	MS51896-20B	SCREW, EXTERNALLY, RE	19
21	PAOZZ	5305000854056	96906	MS3212-39	SCREW, MACHINE	1
22	PAFZZ	5305000545636	96906	MS51957-2	SCREW, MACHINE	16
23	XBFZZ		80063	A3190879	COVER, ELECTRONIC CO	1
24	PAFZZ	5305009051650	80206	NAS135204-10	SCREW, CAP, SOCKET HE	10
25	PAFDD	598014412981	80063	A3251889	CIRCUIT CARD ASSEMB POWER SUPPLY (CAUTION STATIC SENSITIVE)	1
26	XBFZZ		80063	A3154888	COVER, ELECTRONIC CO	1
27	XBFZZ		80063	A3154956	MARKER, IDENTIFI	1
28	PAFZZ	5305007642988	96906	MS51959-2	SCREW, MACHINE	18
29	XBFZZ		80083	A3252066	BOLT, HANGAR	2
30	PAFZZ	5306000545647	96906	MS51957-13	SCREW, MACHINE	10
31	XBFZZ		80063	A3252087	SUPPRESSOR, PARASITI	2
32	XBFZZ		80063	A3252068	CLIP, SPRING TENSION	2
33	XBFZZ		80063	A3252085	BRACKET, MOUNTING	1
34	PAFZZ	5310009282690	96906	MS35338-134	WASHER, LOCK	2
35	PAFZZ	5310009382013	96906	MS35649-224	NUT, PLAIN, HEXAGON	2

END OF FIGURE

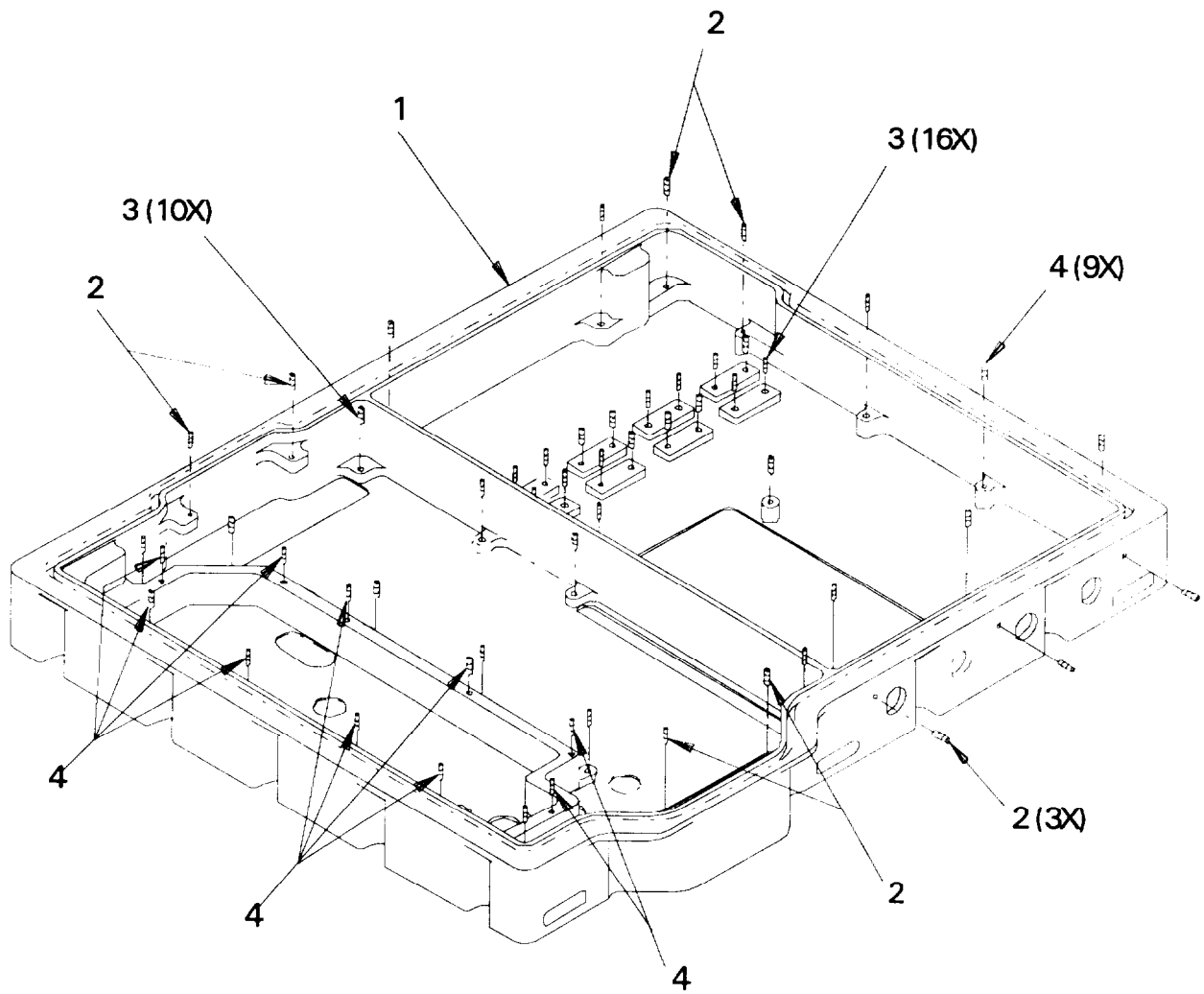


Figure 10. CCRP Cover Assembly

SECTION II			TM-5820-890-23P		(6)	(7)
(1)	(2)	(3)	(4)	(5)		
ITEM NO	SMR CODE	NSN	CAGEC	PART NUMBER	DESCRIPTION AND USABLE ON CODES(UOC)	QTY
GROW 920201 CCRP COVER ASSY						
FIGURE 10						
1	XBFZZ		90063	A3251955	HOUSING, ELECTRONIC	1
2	PAFZZ	5325003380772	96906	MS21209C0215L	INSERT, SCREW THREAD	9
3	PAFZZ	5325010114140	96908	MS21209C041DL	INSERT, SCREW THREAD	26
4	PAFZZ	5325003274820	96908	Ms21209CD415L	INSERT, SCREW THREAD	19

END OF FIGURE

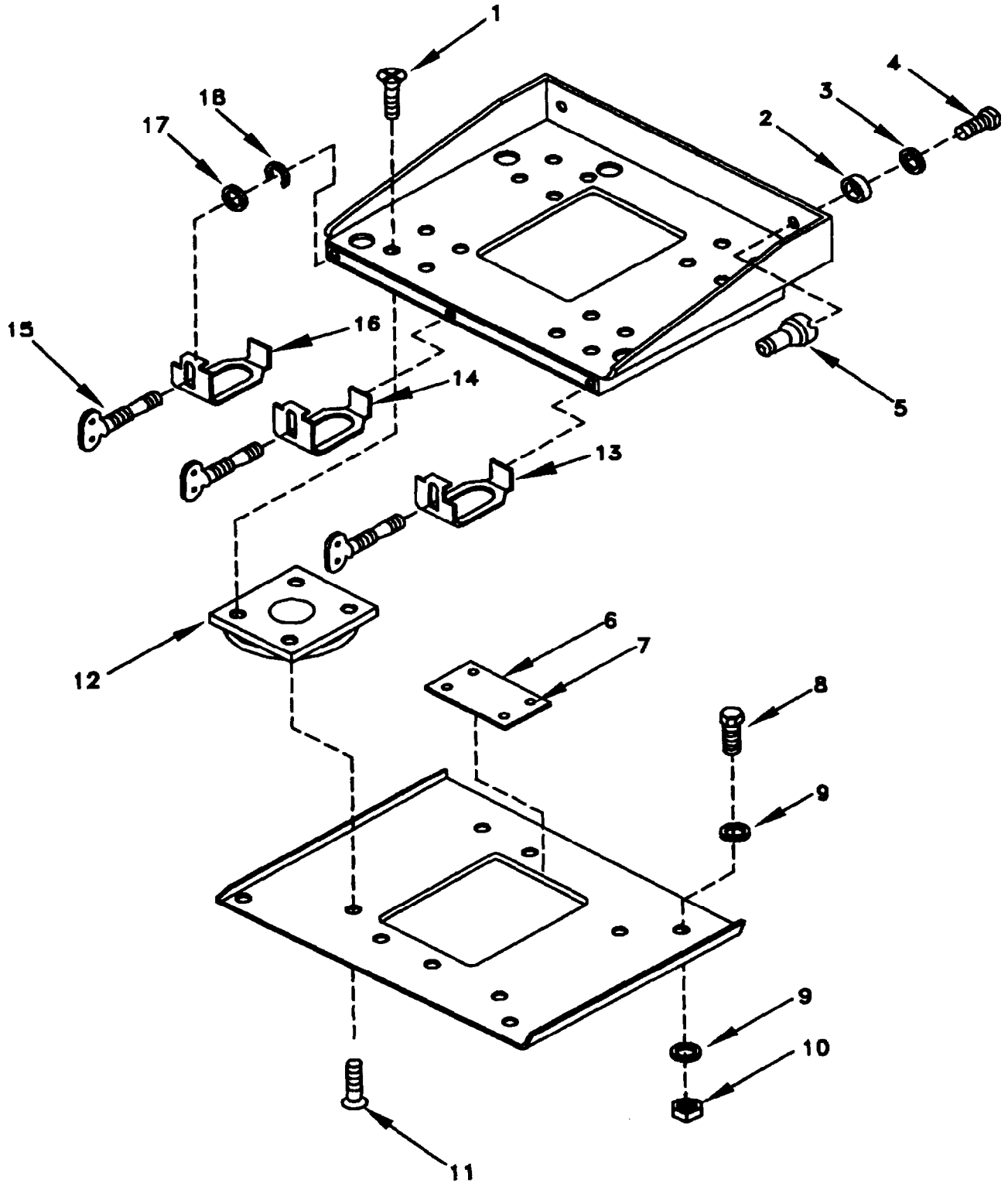


Figure 11. MOUNT MT-6845NRC (Sheet 1 of 2)

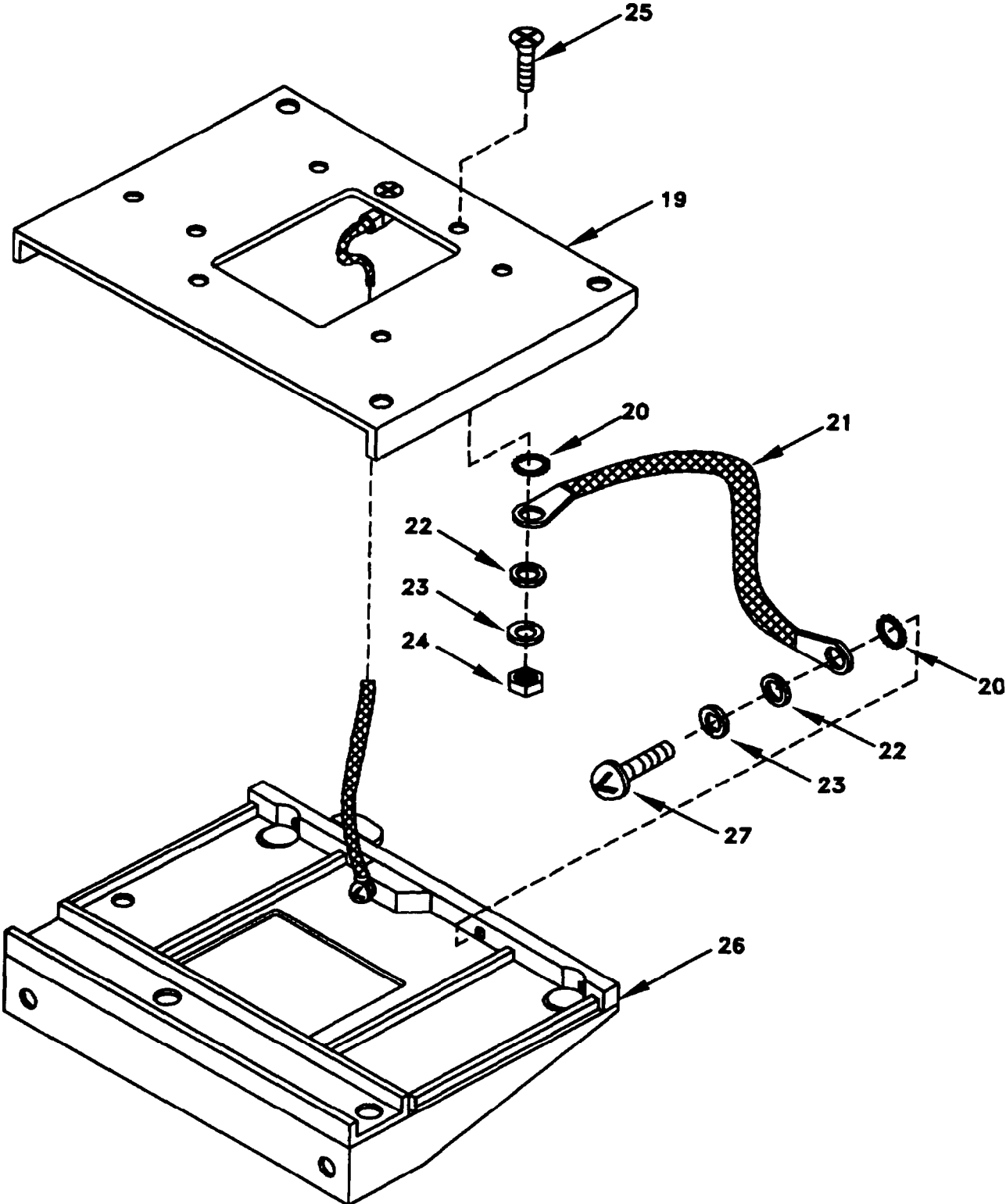


Figure 11. MOUNT MT-6845NRC (Sheet 2 of 2)

SECTION II			TM 11-5820-890-23P		(6)	(7)
(1)	(2)	(3)	(4)	(5)		
ITEM No	SMR CODE	NSN	CAGEC	PART NUMBER	DESCRIPTION AND USABLE ON CODES(UOC)	QTY
GROUP 93 MT-6845/VRC						
FIGURE 11						
1	PAOZZ	5305004808401	96906	A3140088-7	SCREW, MACHINE	18
2	PAOZZ	5310005826677	96906	MS15795-810	WASHER, FLAT	2
3	PAOZZ	5310002434764	98906	MS35338-139B	WASHER, LOCK	2
4	PAOZZ	5305013988785	96906	MS51957-77B	SCREW, MACHINE	2
5	PAOZZ	5315014515120	80063	A3154846	PIN, SHOULDER, HEADLE	2
6	XBOZZ		80063	A3155034	PLATE, IDENTIFICATIO	1
7	PADZZ	5305002535603	98906	MS21318-1	SCREW, DRIVE	4
8	PAOZZ	5306002259089	96906	MS90726-34	BOLT, MACHINE	4
9	PAOZZ	5310008892527	96906	MS45904-72	WASHER, LOCK	4
10	PAOZZ	5310008807746	96906	MS51968-5	NUT, PLAIN, HEXAGON	4
11	PAOZZ	5305012372681	96906	MS24693-98B	SCREW, MACHINE	4
12	PAOZZ	5340D0253547	80063	A3013150-1	MOUNT, RESILIENT	4
13	PAOZZ	5340014509489	80063	A3205014-3	CLAMP, SYNCHRO	1
14	PAOZZ	5340014508931	80063	A3205014-1	CLAMP, SYNCRO	1
15	PAOZZ	5305013191603	80063	A3132832-1	THUMBSCREW	3
16	PAOZZ	5340014515393	80063	A3205014-2	CLAMP SYNCHRO	1
17	PAOZZ	5310013030313	80063	A3014228-1	WASHER, FLAT	3
18	PAOZZ	5325008450286	96906	MS16632-4031	RING, RETAINING	1
19	XBOZZ		80063	A3155028	TRAY, MOUNTING, ELECT	1
20	PAOZZ	5310005432739	96906	MS35333-72	WASHER, LOCK	4
21	PAOZZ	5995014543541	80063	A3164881	LEAD, ELECTRICAL	2
22	PAOZZ	5310002240740	98906	A3013129-5	WASHER, FLAT	4
23	PAOZZ	5310002240748	98906	A3013128-5	WASHER, LOCK	4
24	PAOZZ	5310004200737	96906	MS35649-284B	NUT, PLAIN, HEXAGON	2
25	PAOZZ	5305004703254	96906	MS51957-45B	SCREW, MACHINE	2
26	XBOZZ		80063	A3155026-2	MOUNTING BASE, ELECT	1
27	PADZZ	5305013030311	80063	A3013115-57	SCREW, MACHINE	2

END OF FIGURE

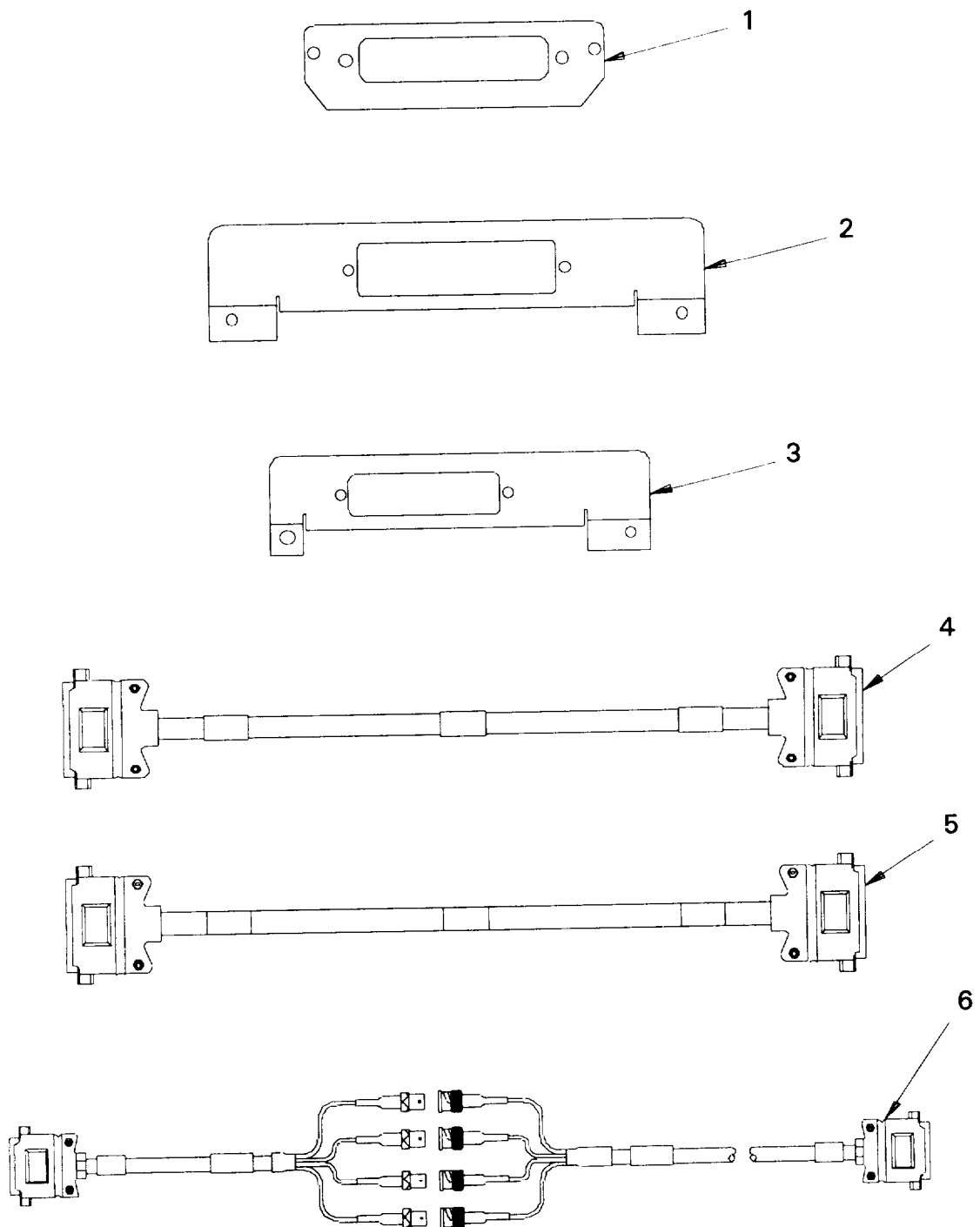


Figure 12. Special Tools (1 of 2)

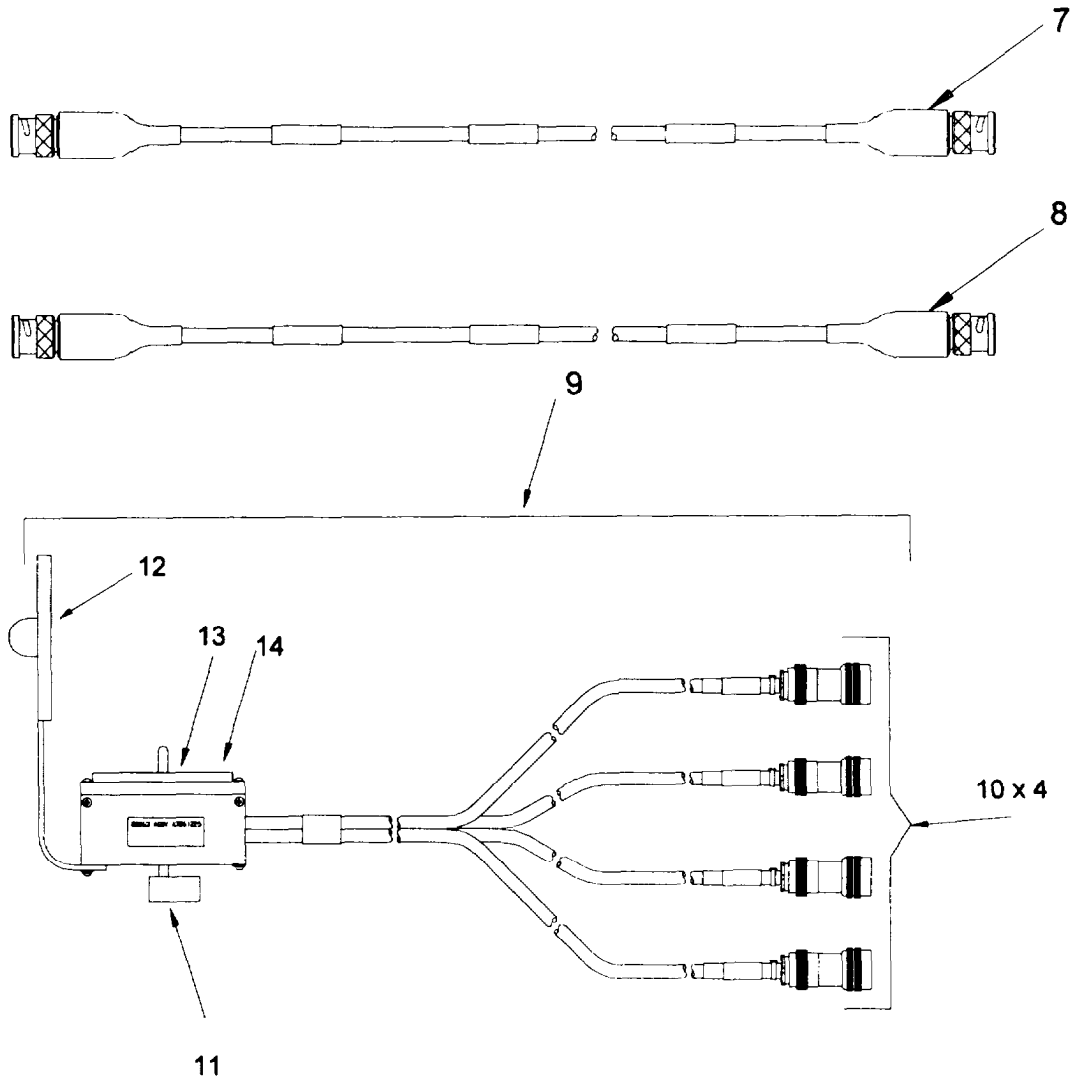


Figure 12. Special Tools (2 of 2)

SECTION II

TM11-5820-890-23P

(1) ITEM NO	(2) SMR CODE	(3) NSN	(4) CAGEC	(5) PART NUMBER	(6) DESCRIPTION AND USABLE ON CODES (UOC)	(7) QTY
GROUP 9209 SPECIAL TOOLS						
FIGURE 12						
1	PEFZZ	5835014526306	80063	A3261220	BRACKET, ELECTRICAL CONNECTOR SUPPORT-FRONT PANEL	1
2	PEFZZ	5935014467085	80063	A3261221	BRACKET, ELECTRICAL CONNECTOR SUPPORT-INTERCONNECT	1
3	PEFZZ	5935014467086	80063	A3261222	BRACKET, ELECTRICAL CONNECTOR SUPPORT-SWITCH MATRIX	1
4	PEFZZ	5995014455210	80063	A3261223-1	CABLE ASSEMBLY, SPEC INTERCONNECTING CONTROL CABLE ASSEMBLY	1
5	PEFZZ	5995014455227	80063	A3261223-2	CABLE ASSEMBLY, SPEC INTERCONNECTING CONTROL CABLE	1
6	PEFZZ	5995014516898	80063	A3261224	CABLE ASSEMBLY, SPEC INTERCONNECTING RF CABLE	1
7	PEFZZ	5995014520978	80063	A3261226-1	CABLE ASSEMBLY, SPEC BNC	1
8	PEFZZ	5995014506441	80063	A3261226-5	CABLE ASSEMBLY, SPEC CABLE ASSEMBLY BNC	1
9	PEFZZ	5995014517786	80063	A3261225	CABLE ASSEMBLY, SPEC GRM-ZIF	1
10	PAFZZ		80063	A3012791-2	CONNECTOR, PLUG, ELEC	1
11	PAFZZ	5935003554459	71468	DLHANDLE	LEVER, MANUAL CONTRO	1
12	PAFZZ		80063	A3167875-1	COVER, ELECTRICAL CO	1
13	PAFZZ	5999010697758	71468	030-2415-001	CONTACT, ELECTRICAL	1
14	PAFZZ	5999013647884	71468	0302415001	CONTACY, ELECTRICAL	1

END OF FIGURE

SECTION IV

TM11-5820-890-23P

CROSS-REFERENCE INDEXES

STOCK NUMBER		NATIONAL STOCK NUMBER INDEX		STOCK NUMBER	
FIG.	ITEM	FIG.	ITEM	FIG.	ITEM
	5310-00-054-0041	7	24		5305-01-303-0311
	5305-00-054-5636	9	22	11	5310-01-303-0313
	5305-00-054-5646	3	29	11	5305-01-319-1603
	5305-00-054-5647	9	30	9	5306-01-352-3297
	5305-00-054-5648	3	26	0012	5999-01-364-7884
	5305-00-054-5649	3	31	7	5935-01-378-9152
		9	5	7	5980-01-394-3371
	5305-00-054-5651	9	4	6	5325-01-395-5075
	5305-00-054-5652	03	5	11	5305-01-398-8785
	5305-00-054-6650	7	23	9	5310-01-419-9007
	5305-00-054-6652	7	28	3	5999-01-422-6423
	5305-00-085-4056	9	21	3	5999-01-422-6424
	5310-00-224-0747	7	16	3	5999-01-422-6425
	5306-00-225-9089	11	8	3	5998-01-422-6516
	5310-00-243-4764	11	3	7	5998-01-422-6517
	5305-00-253-5603	11	7	3	5999-01-422-6518
	5325-00-327-4820	10	4	3	5998-01-422-6519
	5325-00-338-0772	8	1	3	5998-01-422-6520
		10	2	9	5998-01-422-6522
	5935-00-355-4459	12	11	9	5998-01-422-6523
	5325-00-376-8648	6	4	3	5999-01-422-6524
	5310-00-420-0737	11	24	3	5999-01-422-8455
	5305-00-448-6547	7	15	3	5999-01-422-8456
	5305-00-470-3254	11	25	3	5999-01-422-8457
	5970-00-516-1678	9	3	3	5999-01-422-8458
	5310-00-543-2739	11	20	3	5999-01-422-8459
	5355-00-552-0451	7	17	3	5999-01-422-8460
	5310-00-582-5677	11	2	3	5999-01-422-8461
	5310-00-723-9676	3	3	3	5998-01-422-9779
		9	6	3	5999-01-423-4447
	5340-00-725-3547	11	12	3	5999-01-423-7003
	5306-00-764-2966	9	28	3	5999-01-423-7004
	5940-00-816-6103	7	25	3	5999-01-423-7005
	5325-00-845-0286	11	18	3	5999-01-423-8849
	5310-00-880-7746	11	10	3	5999-01-423-8850
	5310-00-889-2527	11	9	3	5999-01-423-8851
	5305-00-906-1650	9	24	3	5999-01-423-8852
	5310-00-928-2690	9	34	3	5999-01-424-2268
	5310-00-933-8118	3	4	9	5998-01-424-2269
	5310-00-934-9748	03	7	3	5999-01-425-8019
	5310-00-938-2013	9	35	5	5305-01-429-2030
	5305-00-993-9189	3	50	7	
	5325-01-011-4140	6	3	3	5340-01-430-6982
		10	3	3	5340-01-430-8852
	5325-01-016-3358	8	2	3	5999-01-431-7323
	5310-01-077-1939	7	27	3	5999-01-432-7707
	5925-01-111-0851	7	3	9	5999-01-432-7711
	5307-01-136-8317	9	2	9	5998-01-441-2981
	5305-01-237-2681	11	11	7	5980-01-442-8537
	5305-01-294-4308	9	9	7	5340-01-445-3385

SECTION IV

TM11-5820-890-23P

CROSS-REFERENCE INDEXES

STOCK NUMBER	NATIONAL STOCK NUMBER INDEX	FIG.	ITEM	FIG.	ITEM
5995-01-445-5193	3	32			
5995-01-445-5194	3	47			
5995-01-445-5206	3	34			
5995-01-445-5208	3	33			
5995-01-445-5210	12	4			
5995-01-445-5226	3	35			
5995-01-445-5227	12	5			
5999-01-445-5668	3	44			
5999-01-445-5684	3	67			
5999-01-445-5689	3	68			
5895-01-445-7076	3	2			
5895-01-445-7107	3	1			
5340-01-445-7270	7	12			
5985-01-445-9078	3	40			
5340-01-446-0976	3	37			
5340-01-446-1096	3	15			
5340-01-446-1097	3	40			
5340-01-446-1098	3	14			
5930-01-446-1264	7	18			
5340-01-446-5090	9	17			
5365-01-448-5328	9	14			
5035-01-446-7085	12	2			
5935-01-446-7086	12	3			
5935-01-446-7576	7	9			
5935-01-447-1120	3	39			
5920-01-447-1445	3	41			
5305-01-447-1738	7	13			
	9	7			
5305-01-447-1739	4	2			
5995-01-447-5127	3	11			
5995-01-449-9720	9	12			
5995-01-449-9958	3	28			
5995-01-450-6441	12	8			
5995-01-450-6675	3	48			
6145-01-450-8395	3	8			
5340-01-450-8931	11	14			
5340-01-450-9489	11	13			
5315-01-451-5120	11	5			
5340-01-451-5393	11	16			
5995-01-451-6898	12	6			
5995-01-451-7786	12	9			
5995-01-452-0978	12	7			
5835-01-452-6306	12	1			
5995-01-454-3541	11	21			

SECTION IV

TM11-5820-890-23P

CROSS-REFERENCE INDEXES

CAGEC	PART NUMBER	PART NUMBER INDEX STOCK NUMBER	FIG.	ITEM
80063	A3012791-2		12	10
80063	A3013115-57	5305-01-303-0311	11	27
96906	A3013128-5		11	23
96906	A3013129-5		11	22
80063	A3013150-1	5340-00-725-3547	11	12
80063	A3014228-1	5310-01-303-0313	11	17
80063	A3132832-1	5305-01-319-1603	11	15
96906	A3140088-7		11	1
80063	A3154845		3	10
80063	A3154846	5315-01-451-5120	11	5
80063	A3154881	5995-01-454-3541	11	21
80063	A3154888		9	28
80063	A3154902	5995-01-445-5194	3	47
61742	A3154018		9	10
80063	A3154956		3	51
			9	27
80063	A3154964	5999-01-431-7323	3	52
80063	A3154976-11	5340-01-446-1098	3	14
80063	A3154976-12	5340-01-446-1097	3	46
80063	A3154976-13	5340-01-446-1096	3	15
61742	A3154976-2	5340-01-430-6982	3	36
80063	A3154976-7	5340-01-446-0976	3	37
80063	A3154985		7	14
80063	A3154986		9	18
80063	A3155012	5310-01-077-1939	7	27
OMW11	A3155024	5340-01-430-8852	3	53
80063	A3155026-2		11	26
80063	A3155028		11	19
80063	A3155034		11	6
80063	A3167875-1		12	12
80063	A3173033		3	45
80063	A3173046	5365-01-446-5328	9	14
80063	A3173060	5305-01-447-1738	7	13
			9	7
80063	A3173086	5305-01-447-1739	4	2
80063	A3173108-3	5999-01-432-7707	3	38
80063	A3173108-4	5999-01-432-7711	9	15
80063	A3173108-6	5999-01-445-5668	3	44
80063	A3173108-7	5999-01-445-5684	3	67
80063	A3173108-8	5999-01-445-5689	3	68
80063	A3173109		5	4
80063	A3173114		4	1
80063	A3173115		5	1
80063	A3173128		3	49
80063	A3190679		9	23
80063	A3190707	5895-01-445-7076	3	2
80063	A3190708	5895-01-445-7107	3	1
80063	A3190749	5995-01-450-6675	3	48
80063	A3190754	5995-01-449-9958	3	28
80063	A3190766		3	27
80063	A3205014-1	5340-01-450-8931	11	14

SECTION IV

TM11-5820-890-23P

CROSS-REFERENCE INDEXES

CAGEC	PART NUMBER	PART NUMBER INDEX STOCK NUMBER	FIG.	ITEM
80063	A32005014-2	5340-01-451-5393	11	16
80063	A3205014-3	5340-01-450-9489	11	13
80063	A3205023		9	13
80063	A3205024		3	30
80083	A3251859	5998-01-422-6516	3	8
80063	A3251864	5998-01-422-6519	3	73
80063	A3251869	5998-01-422-6520	3	71
80063	A3251874	5998-01-422-9779	3	69
80063	A3251879	5998-01-422-6517	7	1
80063	A3251884	5998-01-424-2269	9	11
80063	A3251889	5998-01-441-2981	9	25
80063	A3251894	5998-01-422-6523	9	8
80063	A3251899	5998-01-422-6522	9	1
80063	A3251938	5935-01-447-1120	3	39
80063	A3251950		2	1
80063	A3251952		3	16
80063	A3251953		6	1
80063	A3251954		9	16
80063	A3251955		10	1
80063	A3251960		2	2
80063	A3251962		3	70
80063	A3251963	5985-01-445-9078	3	40
80063	A3251964	5920-01-447-1445	3	41
80063	A3251966	5935-01-446-7576	7	9
80063	A3251967	5930-01-446-1264	7	18
80063	A3251969-3		7	6
80063	A3251974-1	5995-01-445-5226	3	35
80063	A3251974-2	5995-01-445-5206	3	34
80063	A3251974-3	5995-01-445-5208	3	33
80063	A3251974-4	5995-01-445-5193	3	32
80063	A3251975	5995-01-449-9720	9	12
80063	A3252000-1	5999-01-423-8849	3	20
80063	A3252000-2	5999-01-423-8852	3	21
80063	A3252000-3	5999-01-423-9851	3	22
80063	A3252000-4	5999-01-423-7005	3	23
80063	A3252001-1	5999-01-423-7003	3	13
80063	A3252001-2	5999-01-424-2268	3	12
80063	A3252001-4	6999-01-423-4447	3	18
80063	A3252001-5	5999-01-423-7004	3	19
80063	A3252002-1	5999-01-422-6518	3	55
80063	A3252002-10	5999-01-422-8461	3	64
80063	A3252002-11	5999-01-422-8460	3	65
80063	A3252002-2	5999-01-422-8455	3	56
80063	A3252002-3	5999-01-422-8456	3	57
80063	A3252002-4	5999-01-422-6524	3	58
80063	A3252002-5	5999-01-422-6423	3	59
80063	A3252002-6	5999-01-422-6424	3	60
80063	A3252002-7	5999-01-422-8458	3	61
80063	A3252002-8	5999-01-422-8457	3	62
80063	A3252002-9	5999-01-422-8459	3	63
80063	A3252003	5999-01-422-6426	3	66

SECTION IV

TM11-5820-890-23P

CROSS-REFERENCE INDEXES

CAGEC	PART NUMBER	PART NUMBER INDEX STOCK NUMBER	FIG.	ITEM
80063	A3252004	5999-01-423-8850	3	17
80063	A3252005	5999-01-425-8019	3	24
80063	A3252006		3	25
80063	A3252007		7	10
80063	A3252043		3	42
80063	A3252050-1	5340-01-446-5090	9	17
80063	A3252050-2	5340-01-445-3385	7	11
80063	A3252051	5340-01-445-7270	7	12
80063	A3252065		9	33
80063	A3252066		9	29
80063	A3252067		9	31
80063	A3252068		9	32
80063	A3252074-1	5995-01-447-5127	3	11
80063	A3252074-2	6145-01-450-8395	3	9
80063	A3252100		03	72
80063	A3252101		07	22
80063	A3261220	5935-01-452-6306	12	1
80063	A3261221	5935-01-446-7085	12	2
80063	A3261222	5935-01-446-7086	12	3
80063	A3261223-1	5995-01-445-5210	12	4
80063	A3261223-2	5995-01-445-5227	12	5
80063	A3261224	5995-01-451-6898	12	6
80063	A3261225	5995-01-451-7786	12	9
80063	A3261226-1	5995-01-452-0978	12	7
80063	A3261226-5	5995-01-450-6441	12	8
71468	DLHANDLE	5935-00-355-4459	12	11
96906	MS15795-810	5310-00-582-5677	11	2
96906	MS16632-4031	5325-00-845-7286	11	18
96906	M521206C0215L	5325-00-338-0772	8	1
			10	2
96906	M521209C0410L	5325-01-011-4140	6	3
			10	3
96906	MS21206C0415L	5325-00-327-4820	10	4
96906	MS21209C0610L	5325-01-016-3358	8	2
96906	MS21209C0815L	5325-00-376-8648	6	4
96906	MS21209C1-10L	5325-01-395-5075	6	2
96906	MS21318-1		3	43
		5305-00-253-5603	11	7
96906	MS24693-C2	5305-00-993-9189	3	50
96906	MS24693-988	5305-01-237-2681	11	11
96906	MS3212-39	5306-00-085-4056	9	21
96906	MS35333-72	5310-00-543-2739	11	20
96906	MS35338-134	5310-00-928-2690	9	34
96906	MS35338-135	5310-00-933-8118	3	4
96906	M535338-136B	5310-00-224-0747	7	16
96906	MS35338-139B	5310-00-243-4764	11	3
96906	MS35649-224	5310-00-938-2013	9	35
96906	MS35649-244	5310-00-934-9748	03	7
96906	MS35649-284B	5310-00-420-0737	11	24
96906	MS45904-72	5310-00-889-2527	11	9
96906	MS51896-19B	5305-01-429-2030	5	2

SECTION IV

TM11-5820-890-23P

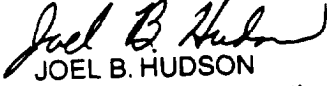
CROSS-REFERENCE INDEXES

CAGEC	PART NUMBER	PART NUMBER INDEX STOCK NUMBER	FIG.	ITEM
96906	MS51896-19B	5305-01-429-2030	7	19
96906	MS51896-20B	5305-01-352-3297	9	20
96906	MS51896-7	5305-01-294-4308	9	9
96906	MS51957-12	5305-00-054-5646	3	29
96906	MS51957-13	5305-00-054-5647	9	30
96906	MS51957-14	5305-00-054-5648	3	26
96906	MS51957-15	5305-00-054-5649	3	31
			9	5
96906	MS51957-17	5305-00-054-5651	9	4
96906	MS51957-18	5305-00-054-5652	03	5
96906	MS51957-2	5305-00-054-5636	9	22
96906	MS51957-26	5305-00-054-6650	7	23
96906	MS51957-27B	5305-00-448-6547	7	15
96906	MS51957-28	5305-00-054-6652	7	28
96906	MS51957-45B	5305-00-470-3254	11	25
96906	MS51957-77B	5305-01-398-8785	11	4
96906	MS51957-804		03	6
96906	MS51959-2	5305-00-764-2966	9	28
96906	M551968-5	5310-00-880-7746	11	10
96906	MS77066-2	5940-00-816-6103	7	25
96906	MS90726-34	5306-00-225-9089	11	8
96906	MS91524-9AP3T0X	5355-00-552-6551	7	17
81349	M22759/11-20-9		7	26
81349	M22759/11-24-9		7	5
81349	M23053/5-103-0		7	7
81349	M39019/01-327	5925-01-111-0651	7	3
81349	M55181/2-01	5935-01-378-9152	7	2
80205	NAS1352C04-10	5305-00-905-1650	9	24
80205	NAS620C10LP		4	3
			5	3
			7	20
		5310-01-419-9007	9	19
80205	NAS620C4L	5310-00-723-9676	3	3
			9	6
80205	NAS620C6L	5310-00-054-0041	7	24
81348	ZZR765/33-001F3		4	4
71468	030-2415-001	5999-01-364-7884	0012	13
71468	0302415001		0012	14
00779	206514-1	5307-01-136-8317	9	2
86928	5621-14-31	5970-00-516-1678	9	3
31757	62036-113	5980-01-394-3371	7	21
03723	87019Y02	5980-01-442-8537	7	8

By Order of the Secretary of the Army:

DENNIS J. REIMER
General, United States Army
Chief of Staff

Official:


JOEL B. HUDSON
Administrative Assistant to the
Secretary of the Army

DISTRIBUTION:

To be distributed in accordance with the initial distribution number (IDN) 360929, requirements for TM 11-5820-890-23P.

SOMETHING WRONG WITH THIS PUBLICATION



THEN ... JOT DOWN THE DOPE ABOUT IT ON THIS FORM. CAREFULLY TEAR IT OUT. FOLD IT AND DROP IT IN THE MAIL.

FROM: (PRINT YOUR UNIT'S COMPLETE ADDRESS)
 Commander
 Stateside Army Depot
 ATTN: AMSTA-US
 Stateside, N.J. 07703-5007

DATE SENT
 10 July 1975

PUBLICATION NUMBER TM 11-5840-340-20P	PUBLICATION DATE 23 Jan 74	PUBLICATION TITLE Radar Set AN/PRC-76
--	-------------------------------	--

BE EXACT PIN-POINT WHERE IT IS

IN THIS SPACE TELL WHAT IS WRONG AND WHAT SHOULD BE DONE ABOUT IT:

PAGE NO	PARA-GRAPH	FIGURE NO	TABLE NO	
2-25	2-28			<p>Recommend that the installation antenna alignment procedure be changed throughout to specify a 2° IFF antenna lag rather than 1°.</p> <p>REASON: Experience has shown that with only a 1° lag, the antenna servo system is too sensitive to wind gusting in excess of 25 knots, and has a tendency to rapidly accelerate and decelerate as it hunts, causing stress on the drive train. Hunting is minimized by adjusting the lag to 2° without degradation of operation.</p>
3-10	3-3		3-1	<p>Item 5, Functional Test. Change "2 dB" to "3 dB".</p> <p>REASON: The adjustment procedure for the TRANS POWER FAULT indicator calls for a 3 dB (500 watts) adjustment to light the TRANS POWER FAULT indicator.</p>
5-6	5-8			<p>and new step f.1 to read, "Replace cover plate removed in step above."</p> <p>REASON: To replace the cover plate.</p>
		FO-3		<p>Zone C 3. On J1-2, change "+24 VDC" to "+5 VDC".</p> <p>REASON: This is the output line of the 5 VDC power supply. +24 VDC is the input voltage.</p>

TEAR ALONG DOTTED LINE

PRINTED NAME, GRADE OR TITLE AND TELEPHONE NUMBER

SSG I. M. DeSpirito 999-1776

SIGN HERE

FILL IN YOUR
UNIT'S ADDRESS

FOLD BACK

DEPARTMENT OF THE ARMY

OFFICIAL BUSINESS

PLEASE
AFFIX
STAMP
POSTAGE
REQUIRED

SAMPLE

Commander
U.S. Army Communications-Electronics Command
and Fort Monmouth
ATTN: MSEL-LC-LEO-D-CS-CFO
Fort Monmouth, New Jersey 07703-5000

TEAR ALONG DOTTED LINE

SOMETHING WRONG WITH THIS PUBLICATION



THEN ... JOT DOWN THE DOPE ABOUT IT ON THIS FORM. CAREFULLY TEAR IT OUT. FOLD IT AND DROP IT IN THE MAIL.

FROM: (PRINT YOUR UNIT'S COMPLETE ADDRESS)

DATE SENT

PUBLICATION NUMBER

PUBLICATION DATE

PUBLICATION TITLE

BE EXACT PIN-POINT WHERE IT IS

IN THIS SPACE TELL WHAT IS WRONG AND WHAT SHOULD BE DONE ABOUT IT:

PAGE NO

PARA-GRAPH

FIGURE NO

TABLE NO

TEAR ALONG DOTTED LINE

PRINTED NAME, GRADE OR TITLE AND TELEPHONE NUMBER

SIGN HERE

FILL IN YOUR
UNIT'S ADDRESS

FOLD BACK

DEPARTMENT OF THE ARMY

OFFICIAL BUSINESS

PLEASE
AFFIX
STAMP
POSTAGE
REQUIRED

TEAR ALONG DOTTED LINE

**Commander
U.S. Army Communications-Electronics Command
and Fort Monmouth
ATTN: AMSEL-LC-LEO-D-CS-CFO
Fort Monmouth, New Jersey 07703-5000**

SOMETHING WRONG WITH THIS PUBLICATION



THEN ... JOT DOWN THE DOPE ABOUT IT ON THIS FORM. CAREFULLY TEAR IT OUT. FOLD IT AND DROP IT IN THE MAIL.

FROM: (PRINT YOUR UNIT'S COMPLETE ADDRESS)

DATE SENT

PUBLICATION NUMBER

PUBLICATION DATE

PUBLICATION TITLE

BE EXACT PIN-POINT WHERE IT IS

IN THIS SPACE TELL WHAT IS WRONG AND WHAT SHOULD BE DONE ABOUT IT:

PAGE NO

PARA-GRAPH

FIGURE NO

TABLE NO

TEAR ALONG DOTTED LINE

PRINTED NAME, GRADE OR TITLE AND TELEPHONE NUMBER

SIGN HERE

FILL IN YOUR
UNIT'S ADDRESS

FOLD BACK

DEPARTMENT OF THE ARMY

OFFICIAL BUSINESS

PLEASE
AFFIX
STAMP
POSTAGE
REQUIRED

TEAR ALONG DOTTED LINE

**Commander
U.S. Army Communications-Electronics Command
and Fort Monmouth
ATTN: AMSEL-LC-LEO-D-CS-CFO
Fort Monmouth, New Jersey 07703-5000**



THEN ... JOT DOWN THE DOPE ABOUT IT ON THIS FORM. CAREFULLY TEAR IT OUT. FOLD IT AND DROP IT IN THE MAIL.

SOMETHING WRONG WITH THIS PUBLICATION

FROM: (PRINT YOUR UNIT'S COMPLETE ADDRESS)

DATE SENT

PUBLICATION NUMBER

PUBLICATION DATE

PUBLICATION TITLE

BE EXACT PIN-POINT WHERE IT IS

PAGE NO	PARA-GRAPH	FIGURE NO	TABLE NO
---------	------------	-----------	----------

IN THIS SPACE TELL WHAT IS WRONG AND WHAT SHOULD BE DONE ABOUT IT:

TEAR ALONG DOTTED LINE

PRINTED NAME, GRADE OR TITLE AND TELEPHONE NUMBER

SIGN HERE

FILL IN YOUR
UNIT'S ADDRESS

FOLD BACK

DEPARTMENT OF THE ARMY

OFFICIAL BUSINESS

PLEASE
AFFIX
STAMP
POSTAGE
REQUIRED

TEAR ALONG DOTTED LINE

**Commander
U.S. Army Communications-Electronics Command
and Fort Monmouth
ATTN: AMSEL-LC-LEO-D-CS-CFO
Fort Monmouth, New Jersey 07703-5000**

